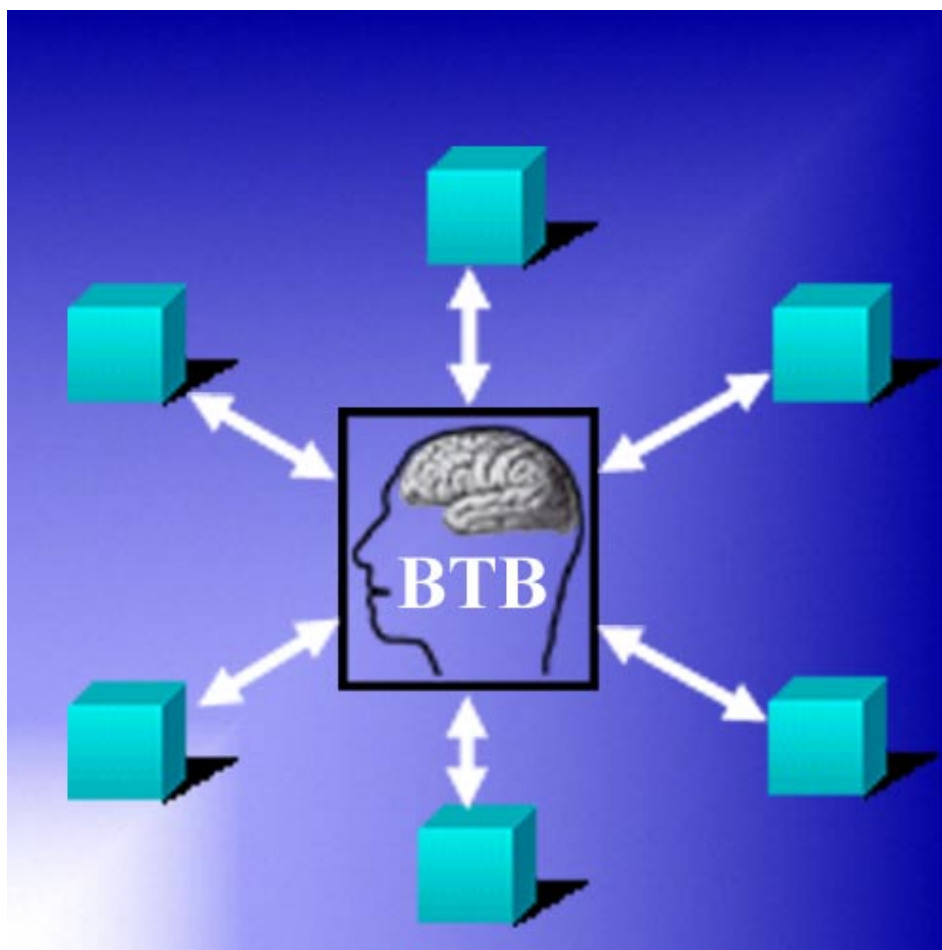


# User Administration Guide

*Version 1 Release 0*





Business Transaction Broker  
for z/OS



# User Administration Guide

*Version 1 Release 0*

**Note!**

Before using this information and the product it supports, be sure to read the general information under “Notices” on page v.

**Second Edition (September 2002)**

This edition applies to Version 1, Release 0 of Business Transaction Broker for z/OS (product number 5799-GPR) and to all subsequent versions, releases, and modifications until otherwise indicated in new editions. Make sure you are using the correct edition for the level of the product.

Download publications via internet at the following address:

<http://www.ibm.com/software/ad/imb>

Publications are not stocked at the address below.

Please address your comments to:

IBM Global Services  
Sortemosevej 21  
DK-3450 Allerød  
Denmark

☎ + (45) 45 23 30 00  
Fax + (45) 45 23 68 01  
E-mail [SPOC@dk.ibm.com](mailto:SPOC@dk.ibm.com)

When you send information to IBM, you grant IBM a nonexclusive right to use or distribute the information in any way it believes appropriate without incurring any obligation to you.

© Copyright International Business Machines Corporation 1992, 2002. All rights reserved.

US Government Users Restricted Rights – Use, duplication or disclosure restricted by GSA ADP Schedule Contract with IBM Corp.

---

# Contents

<b>Notices</b> . . . . .	v
Trademarks and service marks . . . . .	v
<b>Preface</b> . . . . .	vii
About this book . . . . .	vii
Who should read this book . . . . .	vii
Conventions and terminology used in this book . . . . .	vii
Note about version and release numbering . . . . .	vii
Bibliography . . . . .	vii
Books from related libraries . . . . .	viii
How to send your comments . . . . .	ix
<b>Summary of changes</b> . . . . .	xi
<b>Chapter 1. Understanding the administration roles</b> . . . . .	1
Central administration . . . . .	2
Local administration . . . . .	4
Understanding the Agreement Subset . . . . .	5
<b>Chapter 2. Maintaining resources</b> . . . . .	7
Getting the Central User Administration menu . . . . .	7
Adding a country . . . . .	9
Adding a trading partner . . . . .	11
Giving a trading partner access . . . . .	13
Adding a user . . . . .	15
Adding an electronic address for a trading partner . . . . .	18
Maintaining trading partner subscriptions . . . . .	21
Defining external trading partners . . . . .	30
Defining scope . . . . .	32
Adding a person . . . . .	35
<b>Chapter 3. Describing the Central Administrator panels</b> . . . . .	37
Central Trading Partner Administration . . . . .	39
Agreement sets . . . . .	39
Electronic addresses . . . . .	40
Persons . . . . .	41
External Trading Partners . . . . .	43
Subscribe to MailRoom Services . . . . .	44
Trading Partner Users . . . . .	46
Fastpath CUSERS . . . . .	47
Agreement Subsets—prompt . . . . .	48
Scope . . . . .	50
<b>Chapter 4. Maintaining Trading Partners</b> . . . . .	53
Create Trading Partners . . . . .	53
Details of a Trading Partner . . . . .	54
Changing to another Trading Partner . . . . .	55
<b>Chapter 5. Describing the Local Administrator panels</b> . . . . .	57
Getting the Local Administrator main menu . . . . .	57

Typical Local Administrator tasks . . . . .	58
Panel flow for Agreement Subsets . . . . .	71
Agreement Subsets . . . . .	72
Delete/Insert/Modify Agreement Subset . . . . .	72
Modify BPIs in Agreement Subset . . . . .	73
Panel flow for Users . . . . .	75
Users . . . . .	76
User Profile . . . . .	76
Agreement Subsets . . . . .	77
Persons—prompt . . . . .	78
Panel flow for Persons . . . . .	79
Persons . . . . .	80
Insert/Modify/Delete Person . . . . .	80
Panel flow for Subscribe to MailRoom Services . . . . .	82
Subscribe to MailRoom Services . . . . .	83
Select/Modify Subscription . . . . .	83
Panel flow for User access to Agreement Subsets and Scopes . . . . .	85
User List . . . . .	86
User access to Agreement Subsets and Scopes . . . . .	86
Agreement Subsets . . . . .	87
Scope in Agreement Subset . . . . .	88
Restriction Filters in Agreement Subset for User . . . . .	88
<b>Index . . . . .</b>	<b>91</b>

---

## Notices

References in this publication to IBM products, programs, or services do not imply that IBM intends to make these available in all countries in which IBM operates. Any reference to an IBM product, program, or service is not intended to state or imply that only that IBM product, program, or service may be used. Subject to IBM's valid intellectual property or other legally protectable rights, any functionally equivalent product, program, or service may be used instead of the IBM product, program, or service. The evaluation and verification of operation in conjunction with other products, except those expressly designated by IBM, are the responsibility of the user.

IBM may have patents or pending patent applications covering subject matter in this document. The furnishing of this document does not give you any license to these patents. You can send license inquiries, in writing, to:

IBM Director of Licensing  
IBM Corporation  
North Castle Drive  
Armonk, NY 10504-1785  
U.S.A.

---

## Trademarks and service marks

The following terms are trademarks of the IBM Corporation in the United States or other countries or both:

ACF/VTAM	MQSeries
AIX	MVS/ESA
CICS	OS/2
DB2	OS/390
ExpEDItE	QMF
IBM	RACF
IBM Global Network	VTAM
IMS	WebSphere

The following terms, used in this publication, are trademarks of other companies:

Mercator	Mercator Software, Inc.
SAP	SAP AG

Windows and Windows NT are trademarks of Microsoft Corporation in the United States and/or other countries.

UNIX is a registered trademark in the United States and/or other countries licensed exclusively through X/Open Company Limited.





---

## Preface

---

### About this book

This book is intended to help understand the functions and processes of trading partner administration in Business Transaction Broker for z/OS (BTB). It contains information to help you define and maintain your trading partner registrations.

IBM Business Transaction Broker for z/OS helps address brokering requirements and helps enable enterprises to implement brokering solutions with confidence. While IBM Business Transaction Broker for z/OS is designed to facilitate Application-to-Application (A2A) brokering for interchange between internal applications within a customer's enterprise, the dominant strength of this product is revealed and appreciated when implementing Business-to-Business (B2B) brokering for the external interchange outside of the customer's enterprises.

To better emphasize its B2B brokering capabilities, the IBM program product formerly known as Intelligent Message Broker for z/OS has now been renamed Business Transaction Broker for z/OS (BTB).

---

### Who should read this book

This book is for people are responsible for maintaining BTB trading partners at your organization.

---

### Conventions and terminology used in this book

In this book, Business Transaction Broker for z/OS is referred to as "Business Transaction Broker" or simply "BTB" where the context makes the meaning clear.

---

### Note about version and release numbering

Where the documentation for Business Transaction Broker - in particular the *Installation Guide* - refers to the actual contents of the product, e.g. dataset names, it will refer to Version 4, Release 5. This is because this product has a history of being distributed internally within IBM as Intelligent Message Broker (IMB) for a number of years. Within IBM the product has matured to a Version/Release level of 4.5.

---

### Bibliography

## Business Transaction Broker for z/OS books

<i>Business Transaction Broker for z/OS General Information</i>	GC27-1580
<i>Business Transaction Broker for z/OS Facilities Guide</i>	SC27-1584
<i>Business Transaction Broker for z/OS Installation Guide</i>	GC27-1581
<i>Business Transaction Broker for z/OS Application Programming Guide</i>	SC27-1583
<i>Business Transaction Broker for z/OS System Administration Guide</i>	SC27-1582
<i>Business Transaction Broker for z/OS User Administration Guide</i>	SC27-1585

Futher copies of the Business Transaction Broker for z/OS publications can be downloaded from the product web site:

<http://www.ibm.com/software/ad/imb>

---

## Books from related libraries

### CICS TS books

<i>CICS Transaction Server for OS/390 Release Guide</i>	GC34-5352
<i>CICS Transaction Server for OS/390 Installation Guide</i>	GC33-1681
<i>CICS Transaction Server for OS/390 System Definition Guide</i>	SC33-1682
<i>CICS Transaction Server for OS/390 Resource Definition Guide</i>	SC33-1684
<i>CICS Transaction Server for OS/390 Operations and Utilities Guide</i>	SC33-1685
<i>CICS Transaction Server for OS/390 System Programming Reference</i>	SC33-1689
<i>CICS Transaction Server for OS/390 Messages and Codes</i>	GC33-1694
<i>CICS Transaction Server for OS/390 Intercommunication Guide</i>	SC33-1695
<i>CICS Transaction Server for OS/390 Performance Guide</i>	SC33-1699

### DataInterchange for MVS books

<i>DataInterchange Messages and Codes</i>	SB34-2000
<i>DataInterchange Programmer's Reference</i>	SB34-2001
<i>DataInterchange Administrator's Guide</i>	SB34-2002

### DB2 books

<i>DB2 for OS/390 Administration Guide</i>	SC26-8957
<i>DB2 for OS/390 Application Programming and SQL Guide</i>	SC26-8958
<i>DB2 for OS/390 Command Reference</i>	SC26-8960
<i>DB2 for OS/390 Utility Guide and Reference</i>	SC26-8967

### Expedite/CICS books

<i>Customizing and Developing Applications with Expedite/CICS</i>	GC34-3304
---	-----------

### IBM EDI Services Information Exchange books

<i>IBM EDI Services Information Exchange Interface Programming Guide</i>	GC34-2222
--	-----------

### MQSeries books

<i>MQSeries Planning Guide</i>	GC33-1349
<i>MQSeries for OS/390 System Management Guide</i>	SC34-5374

### **MVS books**

*MVS Planning:Global Resource Serialization* GC28-1759

### **RACF books**

*OS/390 Security Server (RACF) Administrator's Guide* SC28-1915

### **Automated Operations Control/MVS books**

*AOC/MVS Planning and Installation* GC28-1082

*AOC/MVS Operations* GC28-1084

### **ACF/VTAM books**

*Advanced Communications Function for VTAM Installation  
and Resource Definition* SC23-0111

---

## **How to send your comments**

Your feedback is important in helping to provide the most accurate and highest quality information. If you have any comments about this book or any other BTB documentation:

- Send your comments by email to [SPOC@dk.ibm.com](mailto:SPOC@dk.ibm.com). Be sure to include the name of the book, the part number of the book, the version of BTB, and, if applicable, the specific location of the text you are commenting on (for example, a page number or table number).
- Mail or fax your comments to the address at the front of this book.



---

## Summary of changes

The major enhancements to this release of Business Transaction Broker are:

### **Source Exit**

BTB now supports source exits, which makes it easier to implement support for new document types. One new area in this release is XML document routing support. The source scenario will handle incoming documents like this:

- A business document in its original format is passed to BTB. MailRoom will perform a lookup to determine if a source exit should be invoked.
- For MQSeries based scenarios there is an Unpack Exit that should split the received MQ buffer into records.
- For all scenarios (except BATCH and TIE-IMS) there is a Source exit that can build BTB routing information (the M-record) if it is not available in the received document.
- The received document together with the generated M-record is stored in the transport table. The remaining processing is unchanged.
- The MailRoom source exit table holds registrations of exits used by source scenarios. Source exits are either global for a scenario, or specific for a single sender.
- MailRoom supplied source exits will, as default, be used to build the M-record for the DI-EDI, EXP-FILE, SAP and SAP-MQ source scenario. A source exit with XML support is available (see below). Other user written source exits can be written to extend the format support in MailRoom.

### **XML support**

BTB now supports receiving and dynamic routing of XML documents. A XML source exit is available to extract XML elements for building BTB routing information (the M-record). A new panel is available to define which XML elements or attributes should be extracted for each XML document type. A new kernel / destination exit can automatically convert a received XML document to a basic flat file format.

### **MQSI V1.1 (MVS) reformatter exit**

BTB now has an MQSI reformatter exit. In the first version it can format a document to a stream format (records separated with character delimiters), put it on a queue, wait for MQSI to reformat it, get the reformatted stream and finally return it to MailRoom as an updated version of the document.

### **MailRoom Continuous Receive panel.**

A new online function makes it easy to check the status of DataInterchange and Expedite/CICS continuous receives. DI profiles can be stopped and started. It is possible to define a number of profiles as mandatory. A function key can be used to check if the mandatory profiles are active.

### **Archiving depending on status**

Every installation must archive data from the MailRoom DB2 tables in order to remove old data. It is now possible to define the status codes that are applicable for archiving. It is thereby possible to reflect the day to day operational method in the archiving strategy. E.g. FAILED documents are considered open problems and stay in MailRoom until fixed (status changes to FINISH or manually CANCELED). Another principle could be that FAILED documents should be automatically archived.

### **Schedule process change**

A change has been made in the Output Schedule in MailRoom to control the order of sending scheduled envelopes for the same destination. Previously the sending order was in envelope key sequence. Now scheduled envelopes to the same destination are grouped in a single destination envelope and the sending order has been changed to the received order.

### **Possibility to Mail Text segments**

In error situations, when processing EDI like EDIFACT and ANSI X12, a copy of the EDI document is needed for documentation. A new function has been implemented to mail the DataInterchange reports and segments to a specific user Id and node or e-mail address.

### **Reflow of saved DI audit reports**

The text in the DataInterchange audit reports is now automatically reflowed to the width of the panel. It is no longer necessary to scroll right and left to read the audit report.

### **Segmentation of saved EDIFACT envelope**

The saved EDIFACT envelope file is now split in segments to improve the readability.

### **Handling of a group of envelopes/requests**

A new facility is made available to handle more than one envelope using a single group command. Some of the online functions (cancel, fail, finish, resend, restart, sysack) are made available as a group command for multiple envelopes.

### **Automatic resending of MAIL destination to Internet**

We now put documents on the MailRoom XMIT queue if the SMTP server is temporary unavailable.

### **New MQSeries Batch Read Utility**

In addition to the MQSeries Batch Write Utility introduced in last release we now also have a MQSeries Batch Read Utility that can get MailRoom formatted messages from a MQ queue and write them to a file.

### **SAP R/3 Version 4 improvements**

MailRoom now supports sending and receiving SAP R/3 Version 4 IDOCs.

**Codepage conversion exit**

A new codepage conversion exit is now available as kernel or destination exit. With supplied codepage translation tables it can convert a document from one codepage to another.

**Mercator remapping exit improvements**

The Mercator exit has been improved with support for selection of profiled or fixed length for input and output (:P or :W parameters to Mercator). Now it is also possible to pass additional command options to Mercator.





# Chapter 1. Understanding the administration roles

The organisation running BTB decides who should have access to which resources and to what data. The administrator within that organisation grants access to the various Trading Partners and Users.

To ease the administration process, it is logically divided into three areas:

- Central administration, described in pages 1 through 55 of this book
- Local administration, described in Chapter 5, “Describing the Local Administrator panels” on page 57
- System administration, described in the *System Administration Guide*

Tasks and responsibilities for each type of administrator are shown in Figure 1.

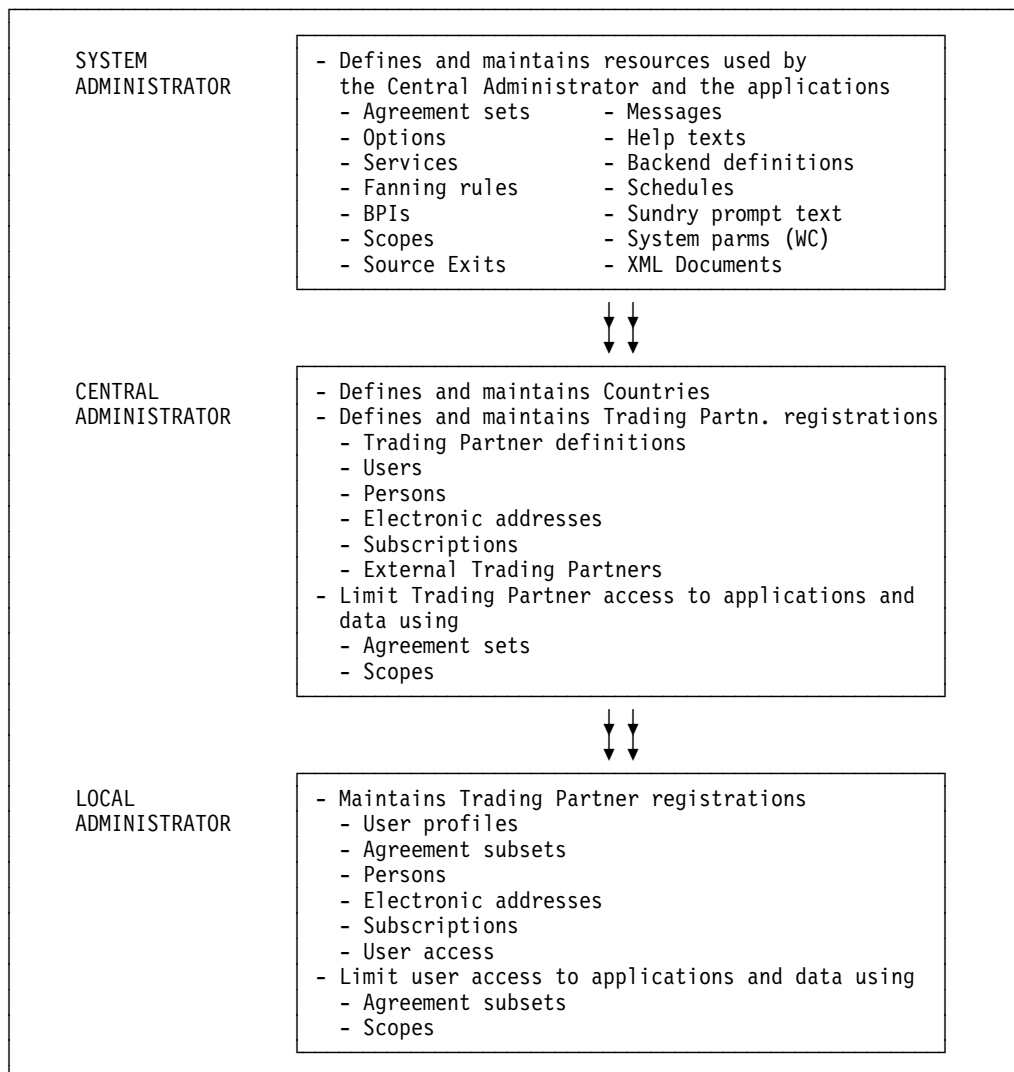


Figure 1. Administration responsibilities

---

## Central administration

A Central Administrator administers the access of the Trading Partner by distributing resources defined by the System Administrator to Trading Partners.

The Central Administrator can limit the privileges of Trading Partners on two levels:

**Applications** The Central Administrator controls which applications the Trading Partner can run by manipulating a set of options, Business Programming Interfaces (BPIs), and Services available to the Trading Partners by means of Agreement Sets.

**Data** The Central Administrator controls what data the Trading Partner can access, and which privileges the Trading Partner has by defining a Scope. The restrictions are defined in the Scope.

Additionally, the Central Administrator maintains the Users, Persons and Electronic Addresses for the Trading Partner.

Users within the Trading Partner's organization have, by default, the same access to resources as the Trading Partner (see Figure 2).

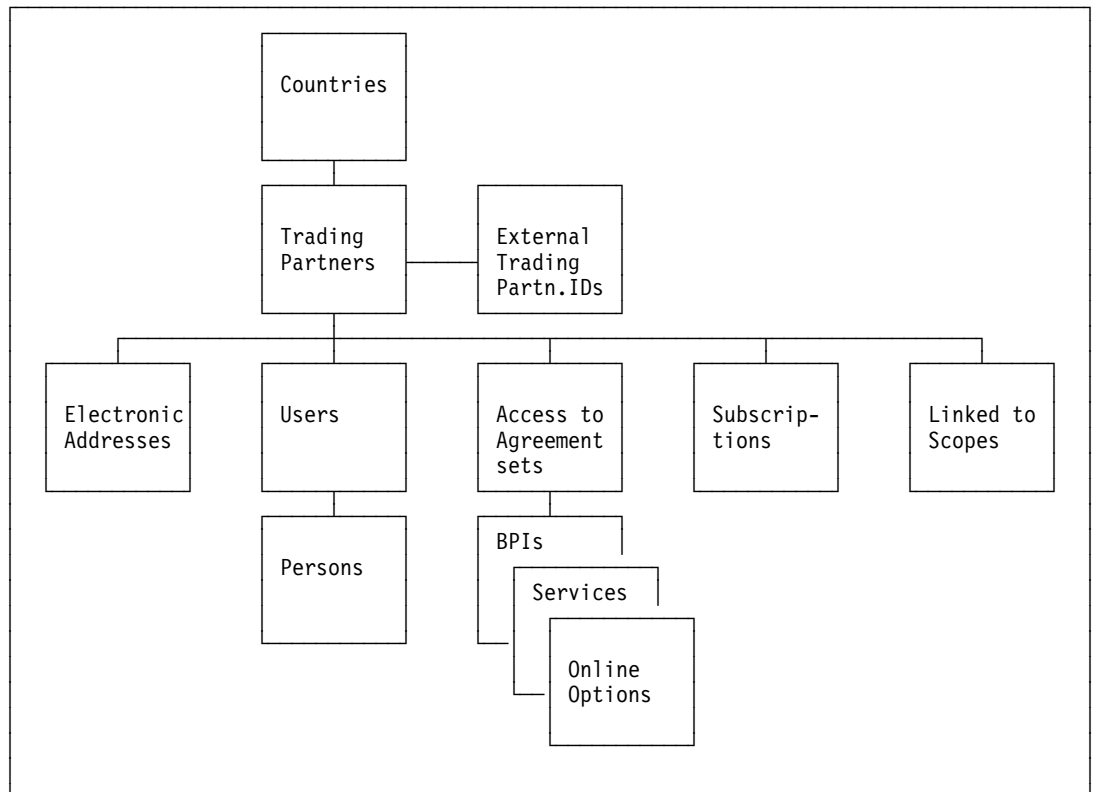


Figure 2. Entities and resources

## Country

The Country Code is the main entity in all registrations in BTB. It is used to group Trading Partners and all registrations belonging to the Trading Partner.

## Trading Partners

The Trading Partner is the main entity in the user area. It is used to identify accounts and companies.

Electronic Addresses are defined for a Trading Partner. Once defined, these definitions can be referenced by all users and resources that this particular Trading Partner has access to.

Users and Persons can only exist if they are associated with a Trading Partner.

Agreement Sets, Subscriptions, and Scopes are resources defined by a system administrator. Once defined, they can be linked to different Trading Partners and Users, allowing them to control their access to the resources.

## External Trading Partner IDs

The External Trading Partner ID is an option that allows a more user friendly alias or nickname of a Trading Partner. It can be used in the application programming interface (API) when calling BTB. The External Trading Partner ID is linked to the Trading Partner. One Trading Partner can have none, one, or many External Trading Partner IDs linked to it.

## Electronic addresses

Electronic Addresses identifying certain destinations can be used for e-mail or as the end-point for other types of communication.

BTB supports the following electronic address types:

<b>FX</b>	Telefax number
<b>HO</b>	Host address (user ID at node ID)
<b>IE</b>	IBM Information Exchange mailbox
<b>IN</b>	Internet e-mail address
<b>LI</b>	Distribution List
<b>ME</b>	IBM Mail Exchange
<b>TC</b>	TCP/IP Server
<b>TL</b>	Tools Append
<b>VM</b>	VM/Host address (user ID at node)

Some of the types are only usable for certain purposes (like a TCP/IP Server) while other types are generic applicable for e-mail (types HO, IN, ME, TL, VM).

Electronic Addresses are either defined locally for a single Trading Partner, or shared for usage by many Trading Partners. The users defined for a Trading Partner can then use both local and shared electronic addresses for sending e-mail or defining MailRoom services and subscriptions.

## Users

User IDs can be end-users for a Trading Partner, or BTB administrators. The user IDs must be defined to RACF.

If no action is taken, the users within a Trading Partner have access to the same objects and resources as the Trading Partner. However, access can be limited further by adding Agreement Subsets and Scopes to the users, allowing many users with different Scope for the same Trading Partner.

## Persons

An optional Person entity to register personal data for a user, such as name, job title and telephone number. A person can be associated with multiple user IDs.

## Agreement Sets

To simplify the authorization process, Options, Services and BPIs can be combined into Agreement Sets and an Agreement Set can be linked to a Trading Partner.

The user, at log on time, will by default be given authorization to execute all the actions contained in the Agreement Set that is linked to the user's Trading Partner.

Multiple Agreement sets can be linked to one Trading Partner.

## Subscriptions

Before a Trading Partner can make use of a MailRoom Service the corresponding Subscriptions have to be registered. A Trading Partner should have subscriptions to all Services that are included in the Agreement Sets associated with the Trading Partner.

## Scopes

Scope is a filter to restrict data. A Trading Partner can be given a Scope to limit which data to work with. Users will by default be given access to the same resources and data as the user's Trading Partner. However, it is possible to limit the Users access by using Agreement Subsets and Scopes. See Chapter 5, "Describing the Local Administrator panels" on page 57 for more information.

---

## Local administration

A Local Administrator administers the Options, BPIs, and Scopes granted to a Trading Partner by the Central Administrator.

By controlling these resources, the Local Administrator can limit the accessibility of the users to applications and to data.

## Applications

The Local Administrator controls which applications the user can run by manipulating Agreement Subsets.

## Data

The Local Administrator controls which data the user can access and with which privileges by providing the user or Agreement subset with a Scope. The restrictions are defined in the Scope. The Local Administrator also maintains users, individuals, and electronic addresses for the Trading Partner.

---

## Understanding the Agreement Subset

All applications in BTB are available through Options on an NPT or through Business Programming Interfaces (BPIs) on a PWS. Options and BPIs are arranged in agreement sets.

The Central Administrator grants a Trading Partner access to these options and BPIs by giving the Trading Partner access to one or more agreement sets. The users connected to the Trading Partner then have access to the total set of options and BPIs in the agreement sets. If one or more users need access to a reduced set of options or BPIs it is the task for a Local Administrator to control this. This is done by making agreement subsets containing a subset of the options and BPIs for the Trading Partner.

A user can be connected to none, one or more agreement subsets. If a user is not connected to any agreement subset, access is given to all options and BPIs for the Trading Partner. An agreement subset can be connected to none, one or many users. Figure 3 on page 6 shows the relationship between Options and BPIs.

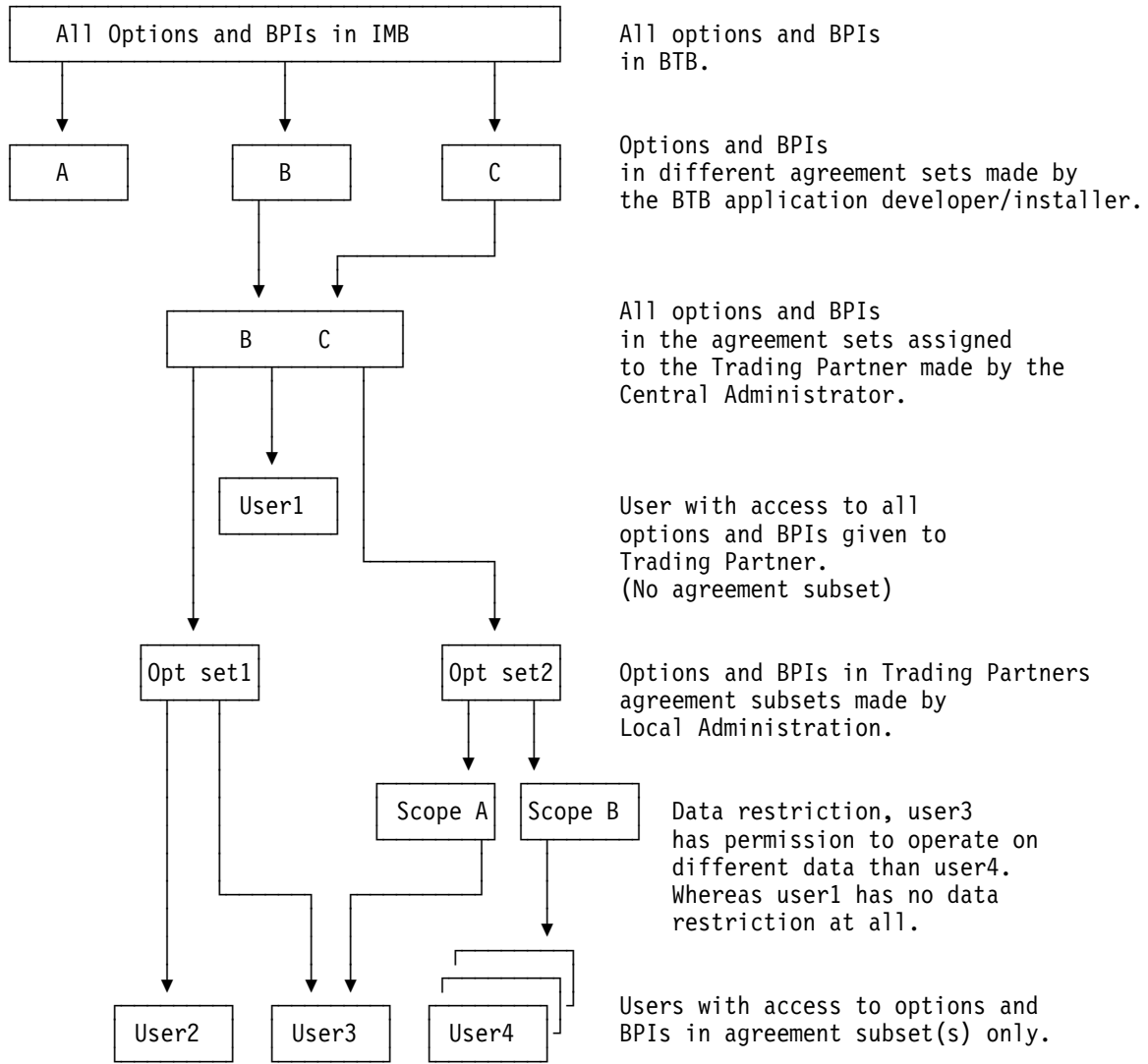


Figure 3. Options and BPIs

## Chapter 2. Maintaining resources

It is the responsibility of the Central Administrator to define resources and make them available to Trading Partners and users.

### Getting the Central User Administration menu

Sign on to your BTB CICS system.

```
KBCSNP                International Business Machines                IMB

=====  =====  =====  =====
=====  =====  =====  =====
===      ===      ===      ===
===      =====  =====  ===
===      =====  =====  ===
=====  =====  =====  =====
=====  =====  =====  =====

Intelligent Message Broker

Type User Identification and Password and press ENTER

User ID. . . . .
Password . . . .

New Password . . . . . (Optional; if change is wanted)

F1=Help  F3=Exit                TESTCICS
```

Figure 4. BTB logon panel

Enter user ID and password and press enter to get to the BTB main menu.

```
MENU                Main Panel                IMB

Type choice or fastpath, then press Enter.

- A. ADM  Administration
- C. COM  Overview - all commands

User...: XXUSER
from...: IBM Denmark, IMB Admin

KBH001I Welcome to IMB 4.5 (c) Copyright IBM Denmark A/S 2002
Command ==>
```

Figure 5. Main Panel

Figure 5 shows the BTB Main Panel.

Type **a** on the command line and press enter.

```
ADM                               Administration                               IMB
Type choice or fastpath, then press Enter.

Administration of IMB tables
- 1. CADM   Central Administration
  2. LADM   Local Administration (menu)
  3. SADM   IMB System Administration (menu)
  4. OPER   IMB Operation
  5. ENVST  MailRoom Envelope Status
  8. REQST  MailRoom Request Status
  9. XMITQ  MailRoom Transmission Queue list
  A. GROUP  MailRoom Group Command
  C. CRLIST MailRoom Continuous Receives
  H. HELPHD Temporary change of Trading Partner

Command  ===>
F1=Help   F3=Exit   F12=Cancel
```

Figure 6. Administration panel

Type **1** in the command line and press enter.

```
CADM                               Central Administration                               IMB
Type choice or fastpath, then press Enter.

- 1. CEADM  Central Trading Partner Administration
  2. CUSERS Trading Partner Users
  3. TPEXT  Search External Trading Partners
  4. AGREM  Agreement Sets
  5. TPNUM  Create Trading Partners
  6. COUNTR Country codes
  7. RULES  Routing Rule Sets

Command  ===>
F1=Help   F3=Exit   F12=Cancel
```

Figure 7. Central Administration panel

Figure 7 shows the Central Administration main menu. You can also reach this panel by typing the fastpath command **CADM** on the command line.



## Adding a country

**Task:** Insert a new Country called *Sample Country* with Country Code 123.

First, go to the Central Administration menu (fastpath **CADM**).

```
CADM                      Central Administration                      IMB

Type choice or fastpath, then press Enter.

-  1. CEADM  Central Trading Partner Administration
   2. CUSERS Trading Partner Users
   3. TPEXT  Search External Trading Partners
   4. AGREM  Agreement Sets
   5. TPNUM  Create Trading Partners
   6. COUNTR Country codes
   7. RULES  Routing Rule Sets

Command  ===>
F1=Help   F3=Exit   F12=Cancel
```

Figure 8. Central Administration panel

Select option 6 or type fastpath command **COUNTR** and you get the panel shown in Figure 9.

```
KBEPBMCL                  Country codes                          IMB

Type one or more action codes, then press Enter.
Action codes: D=Delete I=Insert M=Modify S=Select

A  Cty. Country Name
i  678  Denmark
-  702  Finland
-  706  France
-  724  Germany
-  758  Italy
-  788  The Netherlands
-  806  Norway
-  838  Spain
-  846  Sweden
-  848  Switzerland
-  866  United Kingdom

Command  ===>
F1=Help   F3=Exit   F12=Cancel
```

Figure 9. Country codes panel

Type action code **i** in any of the action fields.

```

KBEP1M1I                      Insert new Country                      IMB
Press Enter to insert new Country
Country. . . . . 123
Country name (English) . Sample Country_____
Country name (Nation.) . _____
Country name (Abbrev.) . _____
ISO identifier . . . . . _
Currency . . . . . _

```

Figure 10. Insert new Country panel

Type **123** in the Country field. Enter the name of the country and, optionally, an abbreviated country name, ISO identifier, and a currency.

Press Enter to insert the new Country.

```

KBEPBMCL                      Country codes                      IMB
Type one or more action codes, then press Enter.
Action codes: D=Delete I=Insert M=Modify S=Select
123 Sample Country_____
A  Cty. Country Name
_ 123 Sample Country

```

Figure 11. Country codes panel

You are returned to the Country codes panel. A search is performed to locate the new country.

## Adding a trading partner

**Task:** Insert a new Trading Partner called *Olsen inc.* with Trading Partner number 001122334. The Trading Partner is located in the Sample Country (Country Code 123).

Navigate to the Central Administration menu using fastpath **CADM**.

```
CADM                      Central Administration                      IMB
Type choice or fastpath, then press Enter.

- 1. CEADM  Central Trading Partner Administration
  2. CUSERS Trading Partner Users
  3. TPEXT  Search External Trading Partners
  4. AGREM  Agreement Sets
  5. TPNUM  Create Trading Partners
  6. COUNTR Country codes
  7. RULES  Routing Rule Sets

Command  ===>
F1=Help   F3=Exit   F12=Cancel
```

Figure 12. Central Administration panel

Select option 5 (fastpath **TPNUM**), Create Trading Partners.

```
KBEABMML                  Create Trading Partners                  IMB
Type one or more action codes, then press Enter.
Action codes: D=Delete I=Insert M=Modify

A  Cty. Number  Trading Partner
i  123  000010033  Louis Peterson Co.
-  123  000010043  School of arts
-  123  000010044  Dan inc.
-  123  000010049  John Tol and sons
-  123  000010050  Peter Heart inc.
-  123  000010051  Tolstone Pictures
-  123  000010056  APX inc.
-  123  000010057  London Zoo
-  123  000010063  Donald Data
-  123  000010064  Middleware Solutions AB
-  123  000010065  Robin Monde
```

Figure 13. Create Trading Partners panel

Type action code **i**, Insert Trading Partner, in any of the action entry fields.

```

KBEACMCI                      Insert Trading Partner                      IMB
Type in entry fields, then press Enter

Country . . . . .           123
Number . . . . .           001122334
Trading Partner . . . . .   Olsen inc._____

```

Figure 14. Insert Trading Partner panel

Enter 123 in the Country field. Enter 001122334 in the Number field. Enter Olsen inc. in the Trading Partner field. Press Enter to insert the new Trading Partner.

```

KBEABMML                      Create Trading Partners                      IMB
Type one or more action codes, then press Enter.
Action codes: D=Delete I=Insert M=Modify

   123 001122334 _____
A  Cty. Number   Trading Partner
_  123 001122334 Olsen inc.

```

Figure 15. Create Trading Partners panel

You are returned to the Trading Partner list. A search is performed to locate the new Trading Partner.

---

## Giving a trading partner access

**Task:** Give Trading Partner *Olsen inc.* access to Agreement Set *ECICUSTO*, *ECINFO* for customers.

Navigate to the Central Administration menu using fastpath **CADM**.

```
CADM                      Central Administration                      IMB
Type choice or fastpath, then press Enter.

-  1. CEADM  Central Trading Partner Administration
   2. CUSERS Trading Partner Users
   3. TPEXT  Search External Trading Partners
   4. AGREM  Agreement Sets
   5. TPNUM  Create Trading Partners
   6. COUNTR Country codes
   7. RULES  Routing Rule Sets

Command  ==>
F1=Help      F3=Exit      F12=Cancel
```

Figure 16. Central Administration panel

Select option 1 (fastpath **CEADM**), Central Administration.

```
KBEABMCL                 Central Trading Partner Administration           IMB
Type one or more action codes, then press Enter.
Action codes: A=Agreement Sets  E=Electronic Addresses  T=External TP's
                P=Persons          S=Subscriptions      U=Users  X=Scope

A  ___ 001122334 _____
a  123 001122334 Olsen inc.
```

Figure 17. Central Trading Partner Administration panel

Enter a search criterion in one or more of the generic search fields and press enter to locate the Trading Partner *Olsen inc.*. Type action code **a** for a list of all Agreement Sets available for subscription.

```

KBEFBMCL                      Agreement Sets                      IMB

Type one or more action codes, then press Enter.
Action codes: A=Add R=Remove

Trading Partner: 123 / 001122334 / Olsen inc.

A Agr.Set Description                      Included
- DEALER Regular PS Dealer                No
- DRSINTER DRS internal use only          No
- ECIAGENT ECINFO for agents (all agent options) No
a ECICUSTO ECINFO for customers            No
- ECIFORH ECINFO forhandler options       No
- ECINFOAL ECINFO all options             No

```

Figure 18. Agreement Sets panel

Type action code **a** next to the Agreement Set *ECICUSTO* and press enter to add the Agreement Set to the total set of Agreement Sets that *Olsen inc.* has access to.

```

KBEFBMCL                      Agreement Sets                      IMB

Type one or more action codes, then press Enter.
Action codes: A=Add R=Remove

Trading Partner: 123 / 001122334 / Olsen inc.

A Agr.Set Description                      Included
- DEALER Regular NORDIC PS Dealer         No
- DRSINTER DRS internal use only          No
- ECIAGENT ECINFO for agents (all agent options) No
* ECICUSTO Added                          Yes
- ECIFORH ECINFO forhandler options       No
- ECINFOAL ECINFO all options             No

```

Figure 19. Agreement Sets panel

The Agreement Set *ECICUSTO* is added to the list and *Yes* appears in the *Included* column.

## Adding a user

**Task:** Insert a user ID *OLSEN1* for trading partner *Olsen inc.*

Navigate to the Central Administration menu. (fastpath **CADM**).

```
CADM                      Central Administration                      IMB
Type choice or fastpath, then press Enter.

-  1. CEADM  Central Trading Partner Administration
   2. CUSERS Trading Partner Users
   3. TPEXT  Search External Trading Partners
   4. AGREM  Agreement Sets
   5. TPNUM  Create Trading Partners
   6. COUNTR Country codes
   7. RULES  Routing Rule Sets

Command  ==> 1
F1=Help   F3=Exit   F12=Cancel
```

Figure 20. Central Administration panel

Select option 1 (fastpath **CEADM**), and press enter.

```
KBEABMCL                  Central Trading Partner Administration          IMB
Type one or more action codes, then press Enter.
Action codes: A=Agreement Sets  E=Electronic Addresses  T=External TP's
                P=Persons          S=Subscriptions      U=Users    X=Scope

A  00112233_
Cty. Number  Trading Partner
u 123 001122334  Olsen inc.
```

Figure 21. Create Trading Partners panel

Enter a search criterion in one or more of the generic search fields and press enter, in order to locate the Trading Partner *Olsen inc.* with number *001122334*. Type action code **u** for a list of all user IDs registered for *Olsen inc.*

```

KBEBBMCL                      Trading Partner Users                      IMB

Type one or more action codes, then press Enter.
Action codes: D=Delete I=Insert M=Modify P=Profile O=Agr.Subset

Trading Partner: 123 / 001122334 / Olsen inc.

  123 001122334 _____
A  Cty. Number  User      Local Administrator  Option and BPI access
_  123 001122334 AGEVERNE                                     Agreement Subset(s)
i  123 001122334 BIASDK                                       Trading Partner access
_  123 001122334 CSPADM   Local Administrator  Trading Partner access

```

Figure 22. Trading Partner Users panel

Type action code **i** for Insert user ID in any of the action fields.

```

KBEBMCI                      Insert new User                      IMB

Press Enter to insert new IMB User

Trading Partner: 123 / 001122334 / Olsen inc.

User . . . . . olsen1__  RACF defined User-ID
Local Administrator . . 0          0 = No, 1 = Yes.

Agreement Subset . . . . 0          0 = No, 1 = Yes.
Agreement Subset Name . _____ +

DIAL-IBM User-ID . . . . _____
SAC   User-ID . . . . _____
Engine User-ID . . . . _____
IMS   User-ID . . . . _____

```

Figure 23. Insert new User panel

Enter the user ID *olsen1* in the *User* field. If the user should be assigned Local Administrator enter *1* in the Local Administrator field (default is 0). Allow the *Agreement Subset* field to default to 0. Press Enter to insert the new User, and you are returned to the list of user IDs.

```

KBEBBMCL                      Trading Partner Users                      IMB

Type one or more action codes, then press Enter.
Action codes: D=Delete I=Insert M=Modify P=Profile O=Agr.Subset

Trading Partner: 123 / 001122334 / Olsen inc.

  123 001122334 OLSEN1__
A  Cty. Number  User      Local Administrator  Option and BPI access
_  123 001122334 OLSEN1                                     Trading Partner access

```

Figure 24. Trading Partner Users panel



On the list, a search is performed in order to locate the new User.

## Adding an electronic address for a trading partner

**Task:** Insert an Electronic Address (type *IE*, IBM Information Exchange Mailbox), where the IE System is *EUR*, the IE account is *DKIE1* and the IE user ID is *USER1*. The file format as Variable record and the Trading Partner is *Olsen inc.*.

Navigate to the Central Administration menu (fastpath **CADM**).

```
CADM                      Central Administration                      IMB

Type choice or fastpath, then press Enter.

- 1. CEADM  Central Trading Partner Administration
  2. CUSERS Trading Partner Users
  3. TPEXT  Search External Trading Partners
  4. AGREM  Agreement Sets
  5. TPNUM  Create Trading Partners
  6. COUNTR Country codes
  7. RULES  Routing Rule Sets

Command ==> 1
F1=Help   F3=Exit   F12=Cancel
```

Figure 25. Central Administration panel

Select option 1 (fastpath **CEADM**). and press enter.

```
KBEABMCL                  Central Trading Partner Administration          IMB

Type one or more action codes, then press Enter.
Action codes: A=Agreement Sets  E=Electronic Addresses  T=External TP's
                P=Persons          S=Subscriptions      U=Users      X=Scope

123 0011223
A  Cty. Number  Trading Partner
e 123 001122334 Olsen inc.
```

Figure 26. Create Trading Partners panel

Enter a search criterion in one or more of the generic search fields and press enter to locate *Olsen inc.*. Type action code **e** for a list of all Electronic Addresses registered with *Olsen inc.*.

```

KBEEDMCL                      Electronic Addresses                      IMB

Type one or more action codes, then press Enter.
Action codes: D=Delete I=Insert C=Copy M=Modify S=Select

Trading Partner: 123 / 001122334 / 01sen inc.

A Electronic Address          Type of address          Scope
- spoc@dk.ibm.com           IN Internet e-mail address Local
- EUR - DKIE1 - USER1      IE IE Mailbox            Local
- SPOC at DKIBMVM1         HO Host address          Local

```

Figure 27. Electronic Addresses panel

Type action code **i** in any of the action entry fields in to insert a new Electronic Address for the Trading Partner.

```

KBEEMCI                      Insert new Electronic Address          IMB

Press Enter to insert new Electronic Address

Addressing mode:
Trading Partner. . . . : 123 / 001122334 / 01sen inc.
Address type . . . . . HO +
Scope of address . . . . 1 +

Host address:
User ID. . . . . _____
Node ID. . . . . _____

```

Figure 28. Insert new Electronic Address panel

You get the panel shown in Figure 28. To insert an IBM Information Exchange Mailbox as Electronic Address, enter **IE** in the Address type field and press Enter. If you press F4 you get a list of valid values.

```

KBEEMCI                      Insert new Electronic Address          IMB

Press Enter to insert new Electronic Address

Addressing mode:
Trading Partner. . . . : 123 / 001122334 / 01sen inc.
Address type . . . . . IE +
Scope of address . . . . 1 +

IE Mailbox:
IE System. . . . . EUR ____ +
Account. . . . . DKIE1 ____
User ID. . . . . USER1 ____
File format. . . . . 2 +

```

Figure 29. Insert new Electronic Address panel

Enter **EUR** for IE System, **DKIE1** for Account, **USER1** for user ID and **2** for the File format (Variable record).

Enter the Scope of address. 1 for local, 2 for Country/Organisation and 3 for Global. If you press F4 you get a list of valid values. Press enter to insert the Electronic Address.

```
KBEEDMCL                Electronic Addresses                IMB

Type one or more action codes, then press Enter.
Action codes: D=Delete I=Insert C=Copy M=Modify S=Select

Trading Partner: 123 / 001122334 / Olsen inc.

  EUR - DKIE1 - USER1_____
A Electronic Address      Type of address      Scope
_ EUR - DKIE1 - USER1    IE IE Mailbox      Local
```

Figure 30. Electronic Addresses panel

A search is performed to locate the new Electronic Address.

## Maintaining trading partner subscriptions

**Task:** *Olsen inc.* needs subscription to the MailRoom Service *KBAZPGMA* (Verification - PGM to Mail).

Navigate to the Central Administration menu. (fastpath **CADM**).

```
CADM                      Central Administration                      IMB

Type choice or fastpath, then press Enter.

-  1. CEADM  Central Trading Partner Administration
   2. CUSERS Trading Partner Users
   3. TPEXT  Search External Trading Partners
   4. AGREM  Agreement Sets
   5. TPNUM  Create Trading Partners
   6. COUNTR Country codes
   7. RULES  Routing Rule Sets

Command ==> 1
F1=Help   F3=Exit   F12=Cancel
```

Figure 31. Central Administration panel

Select option 1 (fastpath **CEADM**) and press enter.

```
KBEABMCL                  Central Trading Partner Administration          IMB

Type one or more action codes, then press Enter.
Action codes: A=Agreement Sets  E=Electronic Addresses  T=External TP's
                P=Persons          S=Subscriptions       U=Users    X=Scope

A  001122
  Cty. Number  Trading Partner
s 123 001122334  Olsen inc.
```

Figure 32. Central Trading Partner Administration panel

Enter a search criterion in one or more of the generic search fields and press enter to locate *Olsen inc.*. Type action code **s** for a list of all MailRoom Services available for subscription.

```

KBEDBMCL          Subscribe to MailRoom Services          IMB

Type one or more action codes, then press Enter.
Action codes: S=Subscribe U=Unsubscribe M=Modify T=TP Subscribers

Trading Partner: 123 / 001122334 / 01sen inc.

A Service Dir Layout Description State Sub.
_ KBAZPGEF Recv KBAZVER-EXP-FILE Verification - PGM to EXP-FIL No
s KBAZPGMA Recv KBAZVER-MAIL Verification - PGM to MAIL No
_ KBAZEXT Send KBAZ-EXTENTED Verification - Extended Routi No
_ KBAZEXT Recv KBAZ-EXTENTED Verification - Extended Routi No

```

Figure 33. Subscribe to MailRoom Services panel

Type action code **s** in front of the MailRoom Service to be subscribed on.

```

KBEICM2I          Insert new MailRoom Receive Subscription  IMB

Press Enter to insert new Receive Subscription

Subscription Data
Service name . . . . . : KBAZPGMA
Description. . . . . : Verification - PGM to MAIL
Enabled. . . . . : _ +
Comments . . . . . : _____

Dest: Mail
Mail address . . . . . : _____ +
Dest Accounting Info . . : _____

```

Figure 34. Insert new MailRoom Receive Subscription panel

Type the Enable code. Press F4 for a list of possible values.

```

KBHLHMCP          List of possible values          IMB

Type one action code, then press Enter.
Action code: S=Select

A Value Description
_ 0 Disabled
s 1 Enabled

```

Figure 35. List of possible values panel

Type action code **s** next to a value.

```

KBEICM2I          Insert new MailRoom Receive Subscription          IMB

Press Enter to insert new Receive Subscription

Subscription Data
Service name . . . . . : KBAZPGMA
Description. . . . . : Verification - PGM to MAIL
Enabled. . . . . : 1 +
Comments . . . . . : An example of making a subscription_____

Dest: Mail
Mail address . . . . . : _____ +
Dest Accounting Info . . : _____

```

Figure 36. Insert new MailRoom Receive Subscription panel

After choosing the Enable code, type your comments and the Mail address of the destination. Press F4 to get a list of possible values for mail addresses.

```

KBEEDMCL          Electronic Addresses          IMB

Type one or more action codes, then press Enter.
Action codes: D=Delete I=Insert C=Copy M=Modify S=Select

Trading Partner: 123 / 001122334 / Olsen inc.

A _____ Type of address Scope
- spoc@xx.yyy.com IN Internet e-mail address Local
- EUR - DKIE1 - USER1 IE IE Mailbox Local
- SPOC at XXXXVM2 HO Host address Local

```

Figure 37. Electronic Addresses panel

Type action code **s** next to the Electronic Address to be selected for the destination and press enter.

```

KBEICM2I          Insert new MailRoom Receive Subscription          IMB

Press Enter to insert new Receive Subscription

Subscription Data
Service name . . . . . : KBAZPGMA
Description. . . . . : Verification - PGM to MAIL
Enabled. . . . . : 1 +
Comments . . . . . : An example of making a subscription_____

Dest: Mail
Mail address . . . . . : HO: SPOC at XXXXVM2_____ +
Dest Accounting Info . . : _____

```

Figure 38. Insert new MailRoom Receive Subscription panel

Press enter and you are returned to the list.

```

KBEDBMCL                Subscribe to MailRoom Services                IMB

Type one or more action codes, then press Enter.
Action codes: S=Subscribe U=Unsubscribe M=Modify T=TP Subscribers

Trading Partner: 123 / 001122334 / Olsen inc.

A Service Dir Layout Description State Sub.
- KBAZPGEF Recv KBAZVER-EXP-FILE Verification - PGM to EXP-FIL No
- KBAZPGMA Recv KBAZVER-MAIL Verification - PGM to MAIL Enabled Yes
- KBAZEXT Send KBAZ-EXTENTED Verification - Extended Routi No
- KBAZEXT Recv KBAZ-EXTENTED Verification - Extended Routi No

```

Figure 39. Subscribe to MailRoom Services panel

A Yes: appears in the subscription column next to the MailRoom Service **KBAZPGMA**.

**Task:** *Olsen inc.* needs subscription to the MailRoom Service **KBAZEXT**, (Verification - Extended Routing) on the send side.

Trading Partner *Verification TP Inc.* (number *000800000*) needs subscription to the same service, but on the receive side.

Navigate to the Central Administration menu. (fastpath **CADM**).

```

CADM                Central Administration                IMB

Type choice or fastpath, then press Enter.

- 1. CEADM Central Trading Partner Administration
  2. CUSERS Trading Partner Users
  3. TPEXT Search External Trading Partners
  4. AGREM Agreement Sets
  5. TPNUM Create Trading Partners
  6. COUNTR Country codes
  7. RULES Routing Rule Sets

Command ==> 1
F1=Help      F3=Exit      F12=Cancel

```

Figure 40. Central Administration panel

Select option 1 (fastpath **CEADM**) and press enter.



```

KBEABMCL                Central Trading Partner Administration                IMB

Type one or more action codes, then press Enter.
Action codes: A=Agreement Sets  E=Electronic Addresses  T=External TP's
                P=Persons          S=Subscriptions        U=Users    X=Scope

                001122
A  Cty. Number   Trading Partner
s  123  001122334  Olsen inc.

```

Figure 41. Central Trading Partner Administration panel

Enter a search criterion in one or more of the generic search fields and press enter to locate *Olsen inc.*. Type action code **s** for a list of all MailRoom Services available for subscription.

```

KBEDBMCL                Subscribe to MailRoom Services                IMB

Type one or more action codes, then press Enter.
Action codes: S=Subscribe  U=Unsubscribe  M=Modify  T=TP Subscribers

Trading Partner: 123 / 001122334 / Olsen inc.

A  Service  Dir  Layout   Description           State  Sub.
-  KBAZPGEF  Recv  KBAZVER-EXP-FILE  Verification - PGM to EXP-FIL  No
-  KBAZPGMA  Recv  KBAZVER-MAIL      Verification - PGM to MAIL      No
s  KBAZEXT   Send  KBAZ-EXTENTED     Verification - Extended Routi    No
-  KBAZEXT   Recv  KBAZ-EXTENTED     Verification - Extended Routi    No

```

Figure 42. Subscribe to MailRoom Services panel

Type action code **s** next to the MailRoom Service to be subscribed to.

```

KBEICM2I                Insert new MailRoom Send Subscription                IMB

Press Enter to insert new Send Subscription

Subscription Data
Service name . . . . . : KBAZEXT
Description . . . . . : Verification - Extended Routing
Source Scenario . . . . . _____ +
Enabled . . . . . _____ +
Comments . . . . . _____

Source: Program
Source Accounting Info . _____

Service Control info

Define System Ack.
System Ack type . . . . . _____ +

```

Figure 43. Insert new MailRoom Send Subscription panel

Type the Source Scenario. Press F4 to get a list of possible values.

```

KBHLHMCP                               List of possible values                               IMB

Type one action code, then press Enter.
Action code: S=Select

A Value      Description
- BATCH      Batch input to MailRoom
- DI-EDI      IBM Data Interchange
- EXP-DOC     Little edi (expEDite/CICS) (with M-record)
- EXP-FILE    Little edi (expEDite/CICS) (flatfile)
- MQ          MQSeries
s PGM         CICS program input to MailRoom
- SAP         SAP/R3 input to MailRoom

```

Figure 44. List of possible values panel

Type action code **s** next to a value.

```

KBEICM2I                               Insert new MailRoom Send Subscription                               IMB

Press Enter to insert new Send Subscription

Subscription Data
Service name . . . . . : KBAZEXT
Description. . . . . : Verification - Extended Routing
Source Scenario. . . . . PGM_____ +
Enabled. . . . . 1 +
Comments . . . . . An example of an Ext. Routing subscript.

Source: Program
Source Accounting Info . _____

Service Control info

Define System Ack.
System Ack type. . . . . _____ +

```

Figure 45. Insert new MailRoom Send Subscription panel

Depending on the Source/Destination Scenario chosen, the fields on the screen will differ. For more information, refer to online help. After completing the relevant fields, press enter, and you are returned to the list.

```

KBEDBMCL                               Subscribe to MailRoom Services                               IMB

Type one or more action codes, then press Enter.
Action codes: S=Subscribe U=Unsubscribe M=Modify T=TP Subscribers

Trading Partner: 123 / 001122334 / 01sen inc.

A Service Dir Layout Description State Sub.
- KBAZPGEF Recv KBAZVER-EXP-FILE Verification - PGM to EXP-FIL No
- KBAZPGMA Recv KBAZVER-MAIL Verification - PGM to MAIL No
- KBAZEXT Send KBAZ-EXTENTED Verification - Extended Routi Enabled Yes
- KBAZEXT Recv KBAZ-EXTENTED Verification - Extended Routi No

```

Figure 46. Subscribe to MailRoom Services panel

A Yes appears in the list next to the MailRoom Service *KBAZEXT*.

Now you must establish the receiving subscription of the MailRoom Service *KBAZEXT* (Verification - Extended Routing) for Trading Partner *Verification TP Inc.*.

Press **F12**(Cancel) or use fastpath **CEADM** command to return to the Trading Partners panel.

```

KBEABMCL                Central Trading Partner Administration                IMB

Type one or more action codes, then press Enter.
Action codes: A=Agreement Sets  E=Electronic Addresses  T=External TP's
              P=Persons          S=Subscriptions        U=Users      X=Scope

   00080000
A  Cty. Number  Trading Partner
s 123 000800000 Verification TP Inc.
```

Figure 47. Central Trading Partner Administration panel

Enter a search criterion in one or more of the generic search fields and press enter to locate *Verification TP Inc.*. Type action code **s** for a list of all MailRoom Services available for subscription.

```

KBEDBMCL                Subscribe to MailRoom Services                IMB

Type one or more action codes, then press Enter.
Action codes: S=Subscribe  U=Unsubscribe  M=Modify  T=TP Subscribers

Trading Partner: 123 / 000800000 / Verification TP Inc.

A  Service  Dir  Layout  Description  State  Sub.
-  KBAZPGEF  Recv  KBAZVER-EXP-FILE  Verification - PGM to EXP-FIL  No
-  KBAZPGMA  Recv  KBAZVER-MAIL  Verification - PGM to MAIL  No
-  KBAZEXT  Send  KBAZ-EXTENTED  Verification - Extended Routi  No
s  KBAZEXT  Recv  KBAZ-EXTENTED  Verification - Extended Routi  No
```

Figure 48. Subscribe to MailRoom Services panel

Type action code **s** next to the MailRoom Service to be subscribed to.

```

KBEICM2I          Insert new MailRoom Receive Subscription          BTB
Press Enter to insert new Receive Subscription

Subscription Data
Service name . . . . . : KBAZEXT
Description . . . . . : Verification - Extended Routing
Destination Scenario . . _____ +
Enabled . . . . . : _ +
Comments . . . . . : _____

Dest: (not selected)
Dest Accounting Info . . _____

Service Control info
Schedule Id. . . . . : _____ +
Acknowledgment level . . _ +
Overdue time . . . . . : _____

```

Figure 49. Insert new MailRoom Receive Subscription panel

Type the Destination Scenario. Press F4 to get a list of possible values.

```

KBHLHMCP          List of possible values          BTB
Type one action code, then press Enter.
Action code: S=Select

A Value          Description
- BATCH          Batch Output from MailRoom
- DI-EDI          IBM Data Interchange
- EXP-DOC         Little edi (expEDite/CICS)
- EXP-FILE        Little edi (expEDite/CICS)
- FAX             Document to FAX destination
- MAIL            Document to Mail destination
- MQ              MQSeries
- PGM-BEC         Program invoked via Back End Communication (BEC)
s PGM-CICS        Program invoked via local or remote CICS TD Queue
- SAP             SAP/R3 Intermediate Document (IDOC)

```

Figure 50. List of possible values panel

Type action code **s** next to a value.

```

KBEICM2I          Insert new MailRoom Receive Subscription          BTB

Press Enter to insert new Receive Subscription

Subscription Data
Service name . . . . . : KBAZEXT
Description. . . . . : Verification - Extended Routing
Destination Scenario . . PGM-CICS +
Enabled. . . . . : 1 +
Comments . . . . . : An example of an Ext. Routing subscript.

Dest: Program/CICS
CICS TD Queue. . . . . : KBG5
Userfield. . . . . : _____
Dest Accounting Info . . _____

Service Control info
Schedule Id. . . . . : _____ +
Acknowledgment level . . _ +

```

Figure 51. Insert new MailRoom Receive Subscription panel

Depending on the Source/Destination Scenario chosen, the fields on the screen will differ. For more information, refer to online help. After completing the relevant fields, press enter, and you are returned to the list.

```

KBEDBMCL          Subscribe to MailRoom Services                    IMB

Type one or more action codes, then press Enter.
Action codes: S=Subscribe U=Unsubscribe M=Modify T=TP Subscribers

Trading Partner: 123 / 000800000 / Verification TP Inc.

A Service Dir Layout Description State Sub.
- KBAZPGEF Recv KBAZVER-EXP-FILE Verification - PGM to EXP-FIL No
- KBAZPGMA Recv KBAZVER-MAIL Verification - PGM to MAIL No
- KBAZEXT Send KBAZ-EXTENTED Verification - Extended Routi No
- KBAZEXT Recv KBAZ-EXTENTED Verification - Extended Routi Enabled Yes

```

Figure 52. Subscribe to MailRoom Services panel

A Yes appears in the list next to the MailRoom Service KBAZEXT.

## Defining external trading partners

**Task:** Define an External Trading Partner ID for *Olsen inc.*.

Navigate to the Central Administration menu (fastpath **CADM**).

```
CADM                      Central Administration                      IMB
Type choice or fastpath, then press Enter.

- 1. CEADM  Central Trading Partner Administration
  2. CUSERS Trading Partner Users
  3. TPEXT  Search External Trading Partners
  4. AGREM  Agreement Sets
  5. TPNUM  Create Trading Partners
  6. COUNTR Country codes
  7. RULES  Routing Rule Sets

Command ==> 1
F1=Help   F3=Exit   F12=Cancel
```

Figure 53. Central Administration panel

Select option 1 (fastpath **CEADM**) and press Enter.

```
KBEABMCL                  Central Trading Partner Administration          IMB
Type one or more action codes, then press Enter.
Action codes: A=Agreement Sets  E=Electronic Addresses  T=External TP's
                  P=Persons          S=Subscriptions      U=Users      X=Scope

      001122
A  Cty. Number  Trading Partner
t 123 001122334  Olsen inc.
```

Figure 54. Central Trading Partner Administration panel

Enter a search criterion in one or more of the generic search fields and press Enter to locate *Olsen inc.*. Type action code **t**, and you get the panel shown in Figure 55 on page 31.

```

KBELBMCL           External Trading Partners           IMB

Type one or more action codes, then press Enter.
Action codes: D=Delete I=Insert M=Modify

Trading Partner: 123 / 001122334 / Olsen inc.

A External Trading Partner _____ Description _____
i Olsen Invoice Department

```

Figure 55. External Trading Partners panel

Type action code i in any of the action fields.

```

KBELCM1I           Insert new External Trading Partner   IMB

Press Enter to insert new External Trading Partner

Trading Partner: 123 / 001122334 / Olsen inc.

External Trading Partner . Olsen Sales Department_____
Description. . . . . _____

```

Figure 56. Insert new External Trading Partner panel

Complete the External Trading Partner field and the Description field and press enter.

```

KBELBMCL           External Trading Partners           BTB

Type one or more action codes, then press Enter.
Action codes: D=Delete I=Insert M=Modify

Trading Partner: 123 / 001122334 / Olsen inc.

    Olsen Sales Department_____
A External Trading Partner _____ Description _____
_ Olsen Sales Department

```

Figure 57. External Trading Partners panel

A search is performed to locate the new External Trading Partner.

## Defining scope

**Task:** Provide Trading Partner *IBM Denmark* (number *009999999*) with scope *123* (administrator of country for country number 123).

Navigate to the Central Administration menu (fastpath **CADM**).

```
CADM                      Central Administration                      IMB
Type choice or fastpath, then press Enter.

- 1. CEADM  Central Trading Partner Administration
   2. CUSERS Trading Partner Users
   3. TPEXT  Search External Trading Partners
   4. AGREM  Agreement Sets
   5. TPNUM  Create Trading Partners
   6. COUNTR Country codes
   7. RULES  Routing Rule Sets

Command ==> 1
F1=Help   F3=Exit   F12=Cancel
```

Figure 58. Central Administration panel

Select option 1 (fastpath **CEADM**) area and press enter.

```
KBEABMCL                  Central Trading Partner Administration                  IMB
Type one or more action codes, then press Enter.
Action codes: A=Agreement Sets  E=Electronic Addresses  T=External TPs
                  P=Persons          S=Subscriptions      U=Users    X=Scope

      123 0099
A  Cty. Number   Trading Partner
x 123 009999999  IBM Denmark
```

Figure 59. Central Trading Partner Administration panel

Enter a search criterion in one or more of the generic search fields and press enter to locate *IBM Denmark*. Type action code **x** for a list of all defined Scopes.



```

KBEKBMCM                Trading Partner Scope                IMB

Type one or more action codes, then press Enter.
Action codes: M=Modify R=Remove

Trading Partner . . . . : 123 / 009999999 / IBM Denmark

  123
A  Cty Scope _____ Description _____ Restriction Filter   Pri
m  123 ADMIN-CTRY       Central User Adm Cty <Inactive>
-   123 MAILROOM-CTRY  Envelope Status Cty <Inactive>
-   123 HELPHD-CTRY    HelpHD Country      <Inactive>

```

Figure 60. Trading Partner Scope panel

Type action code **m** to modify the Scope for the Trading Partner.

```

KBEKCMCM                Trading Partner Scope                IMB

Press Enter to modify Scope

Trading Partner . . : 123 / 009999999 / IBM Denmark
Legal Privileges :

Restriction filter      Privilege
_____                _____  +
_____                _____  +
_____                _____  +
_____                _____  +
_____                _____  +
_____                _____  +
_____                _____  +
_____                _____  +
_____                _____  +
_____                _____  +
_____                _____  +
_____                _____  +
_____                _____  +
_____                _____  +
_____                _____  +

```

Figure 61. Trading Partner Scope panel

Press F4 to get a list of possible values.

```

KBEJEMCP                Scope values for scope                IMB

Type one action code, then press Enter.
Action code: S=Select

Scope . . . . . : 123 / CEADM-CTRY      / Central User Adm Cty

F  Scope value _____ Description _____
-  *            ALL COUNTRIES
S  123         Test country
-  678         Denmark

```

Figure 62. Scope values for scope panel

Type S (Select).



## Adding a person

**Task:** For Trading Partner *Olsen inc.*, insert a Person called *Henrik Doe*. His profession is *Systems Analyst*, and his the telephone extension number is *3673*.

Navigate to the Central Administration menu (fastpath **CADM**).

```
CADM                               Central Administration                               IMB
Type choice or fastpath, then press Enter.

-  1. CEADM  Central Trading Partner Administration
   2. CUSERS Trading Partner Users
   3. TPEXT  Search External Trading Partners
   4. AGREM  Agreement Sets
   5. TPNUM  Create Trading Partners
   6. COUNTR Country codes
   7. RULES  Routing Rule Sets

Command ==> 1
F1=Help   F3=Exit   F12=Cancel
```

Figure 65. Central Administration panel

Select option 1 (fastpath **CEADM**) area and press enter.

```
KBEABMCL                           Central Trading Partner Administration                           IMB
Type one or more action codes, then press Enter.
Action codes: A=Agreement Sets  E=Electronic Addresses  T=External TP's
                P=Persons          S=Subscriptions        U=Users      X=Scope

123 0011223 _____
A  Cty. Number   Trading Partner
p 123 001122334 Olsen inc.
```

Figure 66. Central Trading Partner Administration panel

Enter a search criterion in one or more of the generic search fields and press enter to locate *Olsen inc.*. Type action code **p** to get a list of all persons registered with *Olsen inc.*.

```

KBECBMCL                      Persons                      IMB

Type one or more action codes, then press Enter.
Action codes: D=Delete I=Insert M=Modify

Trading Partner: 123 / 001122334 / Olsen inc.

A Person Name _____ Job Title _____
- Bent Andersen          CSP Sec. Adm.
i Erik Andersson
- Inger Bengtson
- Karin Bisgaard Nielsen
- Kjeld Christensen     IMB Support
- Wolfgang Christensen  Systems Analyst
- Ulla Dalsgaard        Systems Analyst
- Iggy Pop               Entertainment
- Lise Donnerstag       PCADM
- Peter Eibak           Systemkonsulent

```

Figure 67. Persons panel

Type action code **i** to insert *Henrik Doe* for *Olsen inc.*.

```

KBECMCMI                      Insert new Person          IMB

Press Enter to insert new Person

Trading Partner: 123 / 001122334 / Olsen inc.

Title . . . . . Mr_____ (Mr/ Mrs/ Ms)
Firstname . . . . . Henrik_____
Lastname . . . . . Doe_____

Job Title . . . . . Systems analyst_____
Professional Title . . . _____

Mail Point . . . . . _____

Telephone Extension No.. 3673____
Alt. Telephone Ext. No..

```

Figure 68. Insert new Person panel

Complete the fields as shown in Figure 68 and press enter to insert the person.

```

KBECBMCL                      Persons                      IMB

Type one or more action codes, then press Enter.
Action codes: D=Delete I=Insert M=Modify E=El. Addresses S=Subscriptions

Trading Partner: 123 / 001122334 / Olsen inc.

Henrik Doe _____
A Person Name _____ Job Title _____
- Henrik Doe           Systems analyst

```

Figure 69. Persons panel

A search is performed to locate the new Person.

---

## Chapter 3. Describing the Central Administrator panels

This chapter describes the Central Administration panels. Figure 70 on page 38 shows the panel flow for Central User Administration.

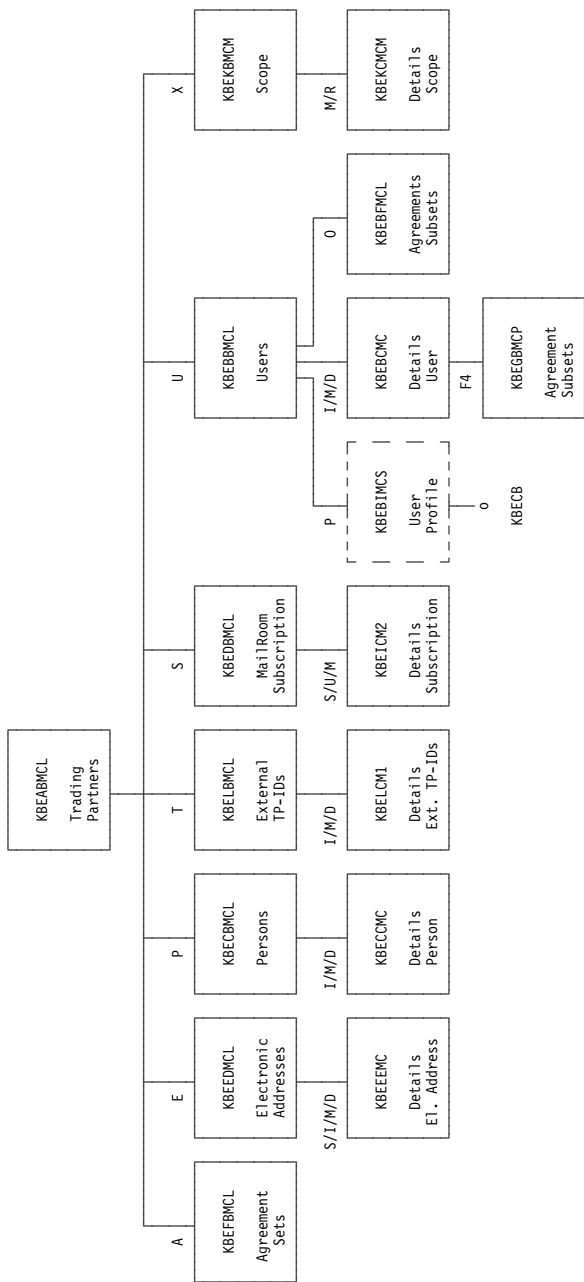


Figure 70. Central Administration Panel flow overview. The letters above the panels indicate the action used in the list panels.

---

## Central Trading Partner Administration

### Access

- Fast path: CEADM
- Menu path: A.1.1

```
KBEABMCL          Central Trading Partner Administration          IMB

Type one or more action codes, then press Enter.
Action codes: A=Agreement Sets  E=Electronic Addresses  T=External TPs  nal TP
              P=Persons          S=Subscriptions        U=Users  X=Scope

      001122
A  Cty. Number  Trading Partner
-  123  000010033  Louis Peterson Co.
-  123  000010043  School of arts
-  123  000010044  Dan inc.
```

Figure 71. Central Trading Partner Administration panel

### Description

The panel shows a list of all Trading Partners registered in BTB.

---

## Agreement sets

### Access

- From the panel in Figure 71.

```
KBEFBMCL          Agreement Sets          IMB

Type one or more action codes, then press Enter.
Action codes: A=Add R=Remove

Trading Partner: 123 / 000010033 / Louis Peterson Co.

A  Agr.Set  Description  Included
-  EDI_IUO  EDI Surveliance for Internal Projects  No
-  EDIALL   All EDI services - including TESTS     No
-  EDISERV  EDI Services                            Yes
```

Figure 72. Agreement sets panel

### Description

The panel shows a list of all existing Agreement Sets.

An Agreement Set contains options, MailRoom services, or BPIs. The central user administrator can add one or more Agreement Sets to a Trading Partner. The Trading Partner has access to the amalgamation of options, MailRoom Services, and BPIs from the Agreement Sets to which the Trading Partner has been given access.

---

## Electronic addresses

### Access

- From the panel in Figure 71 on page 39.

```
KBEEEMCL                      Electronic Addresses                      IMB

Type one or more action codes, then press Enter.
Action codes: D=Delete I=Insert C=Copy M=Modify S=Select

Trading Partner: 123 / 000010033 / Louis Peterson Co.

A Electronic Address          Type of address          Scope
- spoc@xx.yyy.com           IN Internet e-mail address Local
- EUR - DKIE1 - USER1      IE IE Mailbox           Local
- ALERT FORUM - T00LS2      TL Tools Append         Global
```

Figure 73. Electronic Addresses panel

### Description

This panel shows a list of all Electronic Addresses defined for the Trading Partner.

## Details of Electronic Address

### Access

- From the panel in Figure 73.

```
KBEEEMCM                      Modify Electronic Address                      IMB

Press Enter to modify Electronic Address

Addressing mode:
Trading Partner. . . . : 123 / 001122334 / Olsen inc.
Address type . . . . . : IE
Scope of address . . . . 1 +

IE Mailbox:
IE System. . . . . EUR ____ +
Account. . . . . DKIE1 ____
Userid . . . . . USER1 ____
File format. . . . . 2 +
```

Figure 74. Modify Electronic Address panel

### Description

From this panel you can insert, modify, or delete an electronic address, depending on the action code entered in the previous panel.

The fields on the panel vary depending on the Address type.



## Persons

### Access

- From the panel in Figure 71 on page 39.

```
KBECBMCL                      Persons                      IMB

Type one or more action codes, then press Enter.
Action codes: D=Delete I=Insert M=Modify

Trading Partner: 123 / 009999999 / IBM Intern Administration

A _____ Job Title
  Bent Andersen CSP Sec. Adm.
  Patrick Brock  Systems Analyst
```

Figure 75. Persons panel

### Description

This panel shows a list of all Persons registered for a selected Trading Partner. Person is an optional entity in BTB. You need not enter any Persons into the system. The mandatory Users is enough.

## Details of person

### Access

- From the panel in Figure 75.

```
KBECMCM                      Modify Person                      IMB

Press Enter to modify Person

Trading Partner: 123 / 000010033 / Louis Peterson Co.

Title . . . . . Mr_____ (Mr/ Mrs/ Ms)
Firstname(s) . . . . . Henrik_____
Lastname . . . . . Doe_____

Job Title . . . . . Systems Analyst_____
Professional Title . . . Ph D_____

Mail Point . . . . . _____

Telephone Extension No.. _____
Alt. Telephone Ext. No.. _____
```

Figure 76. Modify Person panel

**Description**

From this panel you can insert, modify, or delete a person connected to a Trading Partner depending on the action entered on the previous panel.

---

## External Trading Partners

### Access

- From the panel in Figure 71 on page 39.

```
KBELBMCL          External Trading Partners          IMB
Type one or more action codes, then press Enter.
Action codes: D=Delete I=Insert M=Modify
Trading Partner: 123 / 001122334 / Olsen inc.
A External Trading Partner          Description
_ Olsen Invoice Department
_ Olsen Sales Department
```

Figure 77. External Trading Partners

### Description

The panel shows a list of all External Trading Partner IDs defined for a selected Trading Partner. You need not enter any External Trading Partner into the system. The mandatory Central Trading Partner is enough.

## Details of External Trading Partner IDs

### Access

- From the panel in Figure 77.

```
KBELCM1M          Modify External Trading Partner    IMB
Press Enter to modify External Trading Partner
Trading Partner: 123 / 001122334 / Olsen inc.
External Trading Partner : Olsen Sales Department
Description. . . . . _____
```

Figure 78. Modify External Trading Partner

### Description

From this panel you can insert, modify, or delete External Trading Partner IDs.

## Subscribe to MailRoom Services

### Access

- From the panel in Figure 71 on page 39.

```
KBEDB0CL          Subscribe to MailRoom Services          IMB

Type one or more action codes, then press Enter.
Action codes: S=Subscribe U=Unsubscribe M=Modify T=TP Subscribers

Trading Partner: 123 / 000010033 / Louis Peterson Co.

A Service Dir Layout Description State Sub.
- KBAZBABA Send KBAZBABA Verification - BATCH to BATCH No
- KBAZBAMA Send KBAZBAMA Verification - BATCH to MAIL No
- KBAZDIPC Send KBAXDIPC Verification - DI-EDI to PGM- No
- KBAZPGBA Recv KBAZVER-PGM-BTCH Verification - PGM to BATCH No
- KBAZPGBE Recv KBAZVER-PGM-BEC Verification - PGM to PGM-BEC No
- KBAZPGCC Recv KBAZVER-PGM-COBO Verification - PGM to CICS No
- KBAZPGCI Recv KBAZVER-PGM-CICS Verification - PGM to CICS No
- KBAZPGDI Recv KBAZPGDI Verification - PGM to DI-EDI No
- KBAZPGEF Recv KBAZVER-EXP-FILE Verification - PGM to EXP-FIL No
- KBAZPGMA Recv KBAZVER-MAIL Verification - PGM to MAIL Enabled Yes
```

Figure 79. Subscribe to MailRoom Services panel

### Description

This panel shows a list of all MailRoom Services available for subscription. That is, all MailRoom Services included in the Agreement Sets, which the Trading Partner has been given access to. MailRoom Services that the Trading Partner currently subscribes to are marked Yes.

## Details of Subscription

### Access

- From the panel in Figure 79.

```
KBEICM2M          Modify MailRoom Receive Subscription    IMB

Press Enter to modify Receive Subscription

Subscription Data
Service name . . . . . : KBAZPGMA
Description. . . . . : Verification - PGM to MAIL
Enabled. . . . . : 1 +
Comments . . . . . : _____

Dest: Mail
Mail address . . . . . : _____ +
Dest Accounting Info . . : _____
```

Figure 80. Modify MailRoom Receive Subscription panel

## **Description**

From this panel you can insert or modify a Trading Partner Subscription to a MailRoom Service depending on the action entered in previous panel.

**Fields** Depending on the Subscription Type and the Source and Destination Scenario chosen for the Subscription Type, the fields on this panel will differ.

### **Service name**

Name of Service to subscribe for (can not be changed).

### **Description**

A description of the subscription (can not be changed).

### **Enabled**

Can have one of these values:

**0** The subscription is defined but not active (disabled).

**1** The subscription is enabled and active.

### **Comments**

A text string to put your own comments.

### **Other fields**

Other fields might appear depending on the Subscription Type. For more information about these fields, refer to online help. A plus sign (+) after an input field means that use can press F4 for a prompt list of possible values.

## Trading Partner Users

### Access

- From the panel in Figure 71 on page 39, when action *U* is entered next to a Trading Partner.

```
KBEBBMCL                      Trading Partner Users                      IMB

Type one or more action codes, then press Enter.
Action codes: D=Delete I=Insert M=Modify P=Profile O=Agr.Subset

Trading Partner: 123 / 000747268 / Stone computer

      123 000010033 _____

A  Cty. Number   User      Local Administrator  Option and BPI access
-  123 000010033 CSPADM   Local Administrator  Trading Partner access
-  123 000010033 DK00295                                     Trading Partner access
-  123 000010033 DK00384                                     Agreement Subset(s)
-  123 000010033 DK00420   Local Administrator  Trading Partner access
```

Figure 81. Trading Partner Users panel

### Description

This panel shows a list of all Users registered for the Trading Partner.

By changing the search on the Country and on the Trading Partner, you can to administer Users for other Trading Partners (within the Cty scope).

## Details of Users

### Access

- From the panel in Figure 81.

```
KBEBMCI                      Insert new User                      IMB

Press Enter to insert new IMB User

Trading Partner: 123 / 009999999 / IBM Internal Administration

User . . . . . _____ RACF defined User-ID
Local Administrator . . _      0 = No, 1 = Yes.
Agreement Subset . . . . _      0 = No, 1 = Yes.
Agreement Subset Name . _____ +

DIAL-IBM User-ID . . . . _____
SAC   User-ID . . . . _____
Engine User-ID . . . . _____
IMS   User-ID . . . . _____
```

Figure 82. Insert new User panel

## Description

From this panel you can insert, modify, or delete a User depending on the action entered on the previous panel.

### Fields

**User** The logon user ID for the User. It must be defined in RACF before it is defined in BTB.

### Local Administrator

Default = 0.

If the user performs user administration for the Trading Partner, enter 1. 0 or blank means the user cannot see the options of the Local Administration.

### Agreement Subset

Default = 0.

0 if the user has full access to the agreement sets of the Trading Partner. 1 if the user has access to a limited set.

### Agreement Subset Name

If the field Agreement Subset has the value 1, the user can be connected to one or more already defined Agreement Subsets.

**DIAL-IBM User-ID** This field is for future use.

**SAC User-ID** This field is for future use.

**Engine User-ID** This field is for future use.

**IMS User-ID** This field is for future use.

For more information about these fields, refer to online help.

---

## Fastpath CUSERS

By typing the fastpath command **CUSERS** you have direct access to the same panels and panel flow as if action **U** (Users) was entered in front of *your* trading partner number in the panels shown in Figure 71 on page 39.

---

## Agreement Subsets—prompt

### Access

- From the panel in Figure 82 on page 46, when F4 is pressed.

```
KBEGBMCP                Agreement Subsets                IMB
Type action code, then press Enter
Action code: S=Select

_____
A Agr.Subset  Description
- Order      Order department agreement subset
- Admin      Administrators agreement subset
- Peter      agreement subset for Peter
- Henry      agreement subset for Henry
```

Figure 83. Agreement Subsets panel

### Description

The panel presents a list of the Agreement Subsets defined for the Trading Partner from which ONE set can be selected.

An Agreement Subset is a subset of the Options, BPIs and Services in the Trading Partners Agreement Set(s) and is used to reduce registrations for a group of users.

One or more users can have the same Agreement Subset, and a User can have none, one or more Agreement Subsets. If a User does not have any Agreement Subsets, the user has the same access as the Trading Partner.

## Agreement Subsets

### Access

- From the panel in Figure 81 on page 46.



```

KBEBFMCL                Agreement Subsets                IMB

Type one or more action codes, then press Enter.
Action codes: A=Add R=Remove

User : BIASDK

A  Opt.Set  Description                Included
-  ADMIN    Central User Administration  No
-  BENDT    bendts demo                  No
-  CRBPROF  /// CRB Programmers profile \\  No
-  CSPADM   Sven Almann                  No
-  DEALER   Regular PS dealer            No
-  DIREKTE  Profil til DIMAS II          No
-  DK00420  *** New Access Profile ***     No
-  DK01840  *** New Access Profile ***     No
-  DK01866  *** New Access Profile ***     No
-  DK05165  *** New Access Profile ***     No

```

Figure 84. Agreement Subsets panel

### Description

The panel presents a list of the connection for a User to the Agreement Subsets defined for the Trading Partner.

An Agreement Subset is a subset of the Options, BPIs and Services in the Trading Partners Agreement Set(s) and is used to reduce registrations for a group of users.

One or more users can have the same Agreement Subset, and a User can have none, one or more Agreement Subsets. If a User does not have any Agreement Subsets, s/he has the same access as the Trading Partner.

# Scope

## Access

- From the panel in Figure 71 on page 39.

```
KBEKBMCM          Trading Partner Scope          IMB

Type one or more action codes, then press Enter.
Action codes: M=Modify R=Remove

Trading Partner . . . . : 678 / 009999999 / IBM-Menu Admin, Denmark

  678
A  Cty Scope          Description          Restriction Filter          Pri
-  678 ADMIN-CTRY      Central User Adm Cty      <Active>
-                                     *
-                                     123          UPD
-  678 MAILROOM-CTRY   Envelope Status Cty      <Active>          READ
-                                     123          ALL
-  678 HELPHD-CTRY     HelpHD Country            <Active>          DOC
-                                     678
-                                     *
```

Figure 85. Trading Partner Scope panel

## Description

Some applications in BTB (or external applications) require additional access in the form of a *scope*. A scope is a restriction filter indicating which data the Trading Partner can operate on. You can also define specific privileges in a scope. The panel shows a list of all available Scopes and whether the Scopes are linked to the selected Trading Partner. If a Scope is linked to the Trading Partner, *<Active>* is displayed. For all active Scopes, a list of all restriction filters with possible privileges is displayed.

These Scopes are used by BTB applications:

### ADMIN-CTRY

Scope for central user administration (fastpath CEADM).

### HELPHD-CTRY

Scope for temporary change to another trading partner number (fastpath HELPHD).

### MAILROOM-CTRY

Scope for MailRoom Envelope Status (fastpath ENVST).

If a Trading Partner needs to run the fastpath command **CEADM** (option A1), the Trading Partner must be linked to the ADMIN-CTRY scope.

The Restriction Filter indicates which Country Codes the Trading Partner is allowed to operate on.

These Privileges are used on the BTB Scopes:

### ADMIN-CTRY = UPD

For all actions.

**ADMIN-CTRY = READ**

READ for read and browse actions only.

**HELPHD-CTRY**

Privileges are not used (fastpath HELPHD).

**MAILROOM-CTRY = ALL**

For all actions in MailRoom like CANCEL, SYSACK, RESTART, FAIL, EVENT, REQUEST and VERSIONS.

**MAILROOM-CTRY = DOC**

Allows read all MailRoom data included the document like REQUEST, EVENT and VERSIONS.

For more information about these fields, refer to online help.

## Details of scope

### Access

- From the panel in Figure 85 on page 50.

KBEKCMCM	Trading Partner Scope	IMB
Press Enter to modify Scope		
Trading Partner . : 678 / 009999999 / IBM-Menu Admin, Denmark		
Legal Privileges : ALL DOC		
Restriction filter	Privilege	
*_____	DOC_	+
123_____	ALL_	+
678_____	ALL_	+
_____	____	+
_____	____	+
_____	____	+
_____	____	+
_____	____	+
_____	____	+
_____	____	+
_____	____	+

Figure 86. Trading Partner Scope panel

### Description

From this panel you can insert, modify, or delete Restriction Filters. The type of validation depends on which validation code is chosen when the scope was defined. If the validation code of the Scope is zero, the Restriction Filters will be the same as that defined in the BTB Application Installation (use F4 for a list of possible values).

### Fields

#### Restriction Filter

Restricts access. For a country scope, an asterisk in the *Restriction Filter* field grants access to all countries. A number restricts the scope to that country code.

**Privilege** Use one of the values shown in the *Legal Privileges* field. If no value is displayed in the *Legal Privileges* field, no privileges can be used. Privileges are not used for the *HELPHD-CTRY* scope.

For more information about these fields, refer to online help.

---

## Chapter 4. Maintaining Trading Partners

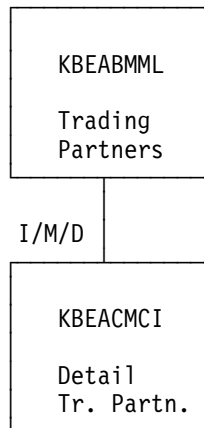


Figure 87. Central Administration application structure overview. The letters above the panel indicate the action used in the list panel

---

### Create Trading Partners

#### Access

- Fast path: TPNUM
- Menu path: A.1.5

```
KBEABMML                Create Trading Partners                BTB

Type one or more action codes, then press Enter.
Action codes: D=Delete I=Insert M=Modify

A  Cty. Number  Trading Partner
-  123  000010033  Louis Peterson Co.
-  123  000010043  School of arts
-  123  000010044  Dan inc.
-  123  000010049  John Dan and sons
```

Figure 88. Create Trading Partners panel

#### Description

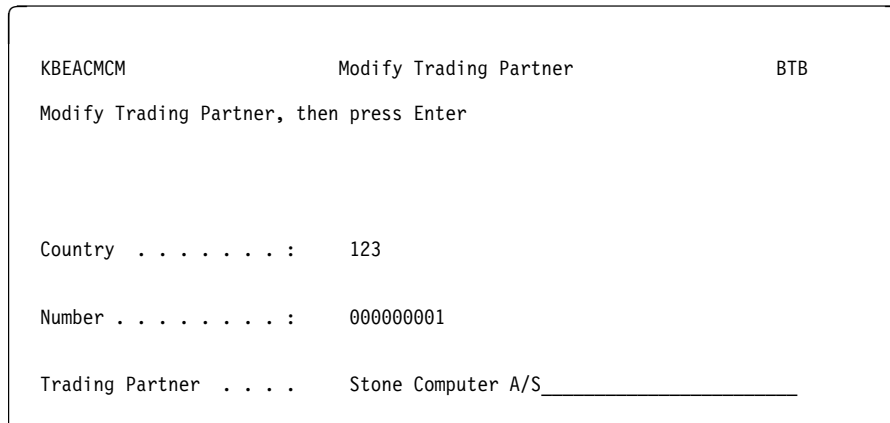
The panel shows a list of all Trading Partners registered in BTB.

---

## Details of a Trading Partner

### Access

- From panel “Create Trading Partners” on page 53.



```
KBEACMCM          Modify Trading Partner          BTB
Modify Trading Partner, then press Enter

Country . . . . . :    123
Number . . . . .   :    000000001
Trading Partner . . . . Stone Computer A/S _____
```

Figure 89. Modify Trading Partner panel

### Description

From this panel you can insert, modify, or delete a Trading Partner depending on the action entered on previous panel.

#### Fields

**Country:** Country code. This must be defined in panel “Adding a country” on page 9. before any Trading Partners can be defined.

**Number:** A unique number (for this country code) defining the Trading Partner.

**Trading Partner:** The name of the Trading Partner.

---

## Changing to another Trading Partner

### Access

- Fast path: HELPHD
- Menu path: A.H

```
KBEABMHL          Temporary change of Trading Partner          BTB

Type action code, then press Enter.
Action code: S=Select

A  Cty. Number      Trading Partner
-  123 000800000    Verification TP Inc.
-  123 000800001    Sample TP no. 1 (sender)
-  123 000800002    Sample TP no. 2 (sender)
-  123 000800003    Sample TP no. 3 (sender)
-  123 000800011    Sample TP no. 11 (receiver)
-  123 000800012    Sample TP no. 12 (receiver)
-  123 000800013    Sample TP no. 13 (receiver)
-  123 001122334    Olsen inc.
-  123 009999999    IBM Test Country users
```

Figure 90. Temporary change of Trading Partner

### Description

Every user logged on to BTB belongs to a specific Trading Partner. However a Central Administrator can temporarily change to another Trading Partner.

To run the HELPHD command, the user must have access to the HELPHD-CTRY scope. Running the HELPHD command could give a User superior rights, because the user gets the same access as the temporary Trading Partner.

Choose one Trading Partner on the list by typing **S** in action field. Type **RESET** in the command line to return to the normal environment.





## Chapter 5. Describing the Local Administrator panels

### Getting the Local Administrator main menu

Signon to your BTB CICS system.

```
KBCSNP                      International Business Machines                      IMB

=====  =====  =====  =====
=====  =====  =====  =====
===      ==      ==      ==      ==      ==
===      ==      ==      ==      ==      ==
===      ==      ==      ==      ==      ==
=====  =====  =====  =====
=====  =====  =====  =====

Intelligent Message Broker

Type User Identification and Password and press ENTER

Userid . . . . .
Password . . . . .

New Password . . . . . (Optional; if change is wanted)

F1=Help  F3=Exit                      TESTCICS
```

Figure 91. BTB logon panel

Enter user ID and password and press enter in order to get to the BTB main menu.

```
MENU                          Main Panel                          IMB

Type choice or fastpath, then press Enter.

- A. ADM  Administration
- C. COM  Overview - all commands

User...: XXUSER
from...: IBM Denmark, IMB Admin

KBH001I Welcome to IMB 4.5 (c) Copyright IBM Denmark A/S 2002
Command ==>
```

Figure 92. Main Panel

Figure 92 shows the BTB Main Panel.

Type **LADM** on the command line and press enter.

```
LADM                               Local Administration (menu)           IMB

Type choice or fastpath, then press Enter.

- 1. AGRSUB Agreement Subsets
  2. USERS  Users
  3. PERSON Persons
  4. SUBSCR Subscribe to MailRoom Services
  5. ELADR  Electronic Addresses
  7. BPITP Refresh BPIs for a Trading Partner
  8. USERAC User Access
  9. USERLI User List

Command ==>
F1=Help   F3=Exit   F12=Cancel
```

Figure 93. Local Administration (menu)

Figure 93 shows the Local Administration main menu. You can also reach this panel by typing the fastpath command **LADM** on the command line on the panel shown in Figure 92 on page 57.

---

## Typical Local Administrator tasks

The tasks in this chapter are typical of those that a Local Administrator might perform for the Trading Partner called *Stone Computer A/S*.

### Task 1

A new employee is hired to do some dealer reporting. The employee is not permitted to use any other options than those that are needed for the job.

The Local Administrator at *Stone Computer A/S* must insert an Agreement Subset called *FosStone* which will include all required options (see “Making an Agreement Subset” on page 59).

BPIs are added to the Agreement Subset in “Inserting BPIs in an Agreement Subset” on page 62.

A user is connected to the Agreement Subset in “Connecting a User to an Agreement Subset” on page 65.

Finally, the Person is added and connected to the user.

## Task 2

Some applications in BTB require special access in the form of a *scope*. An example of such an application is MailRoom Envelope Status. The Local Administrator must grant a user access to MailRoom Envelope Status in BTB, with a restriction to operate for a single country code. This is done by defining an agreement subset, (see “Making an Agreement Subset”).

The user is connected to the Agreement Subset in “Connecting a User to an Agreement Subset” on page 65, and finally the scope *MAILROOM-CTRY* is added to the relation in “Connecting a Scope to a User or Agreement Subset” on page 67.

## Task 3

You also can adjust the environment for a user (see “Adjusting the environment for a User” on page 69).

## Making an Agreement Subset

Create an Agreement Subset called *FOSSTONE* with the description *Dealer Order Services for Stone Com. A/S*. Include options **512**, **513** and **514**.

To do this, navigate to the Local Administration menu using the fastpath command **LADM**. You get the panel shown in Figure 94.

```
LADM                      Local Administration (menu)                      IMB

Type choice or fastpath, then press Enter.

_  1. AGRSUB Agreement Subsets
   2. USERS  Users
   3. PERSON Persons
   4. SUBSCR Subscribe to MailRoom Services
   5. ELADR  Electronic Addresses
   7. BPITP Refresh BPIs for a Trading Partner
   8. USERAC User Access
   9. USERLI User List

Command ==> 1
F1=Help   F3=Exit   F12=Cancel
```

Figure 94. Local Administration (menu) panel

Select option 1, or type the fastpath command, **AGRSUB**.

```

KBEGBMLL                Agreement Subsets                IMB

Type one or more action codes, then press Enter.
Action codes: I=Insert D=Delete B=BPIs O=Options

A Agr.Subset Description
i

KAA100I No lines satisfy search argument

```

Figure 95. Agreement Subsets panel

Type the action code **i** and press enter.

```

KBEGCMLI                Insert Agreement Subset          IMB

Enter Agr.Subset Name & Desc., type action codes and press Enter
Action codes: A=Add R=Remove

Agr.Subset Name/Desc.: FOSStone / Dealer Order Services for Stone Com. A/S

A Option Fastp. Description                Included

KBE112I Enter Agreement Subset name and description

```

Figure 96. Insert Agreement Subset panel

Type the name of the new Agreement Subset *FOSStone* in the **Agr.Subset Name** field and the description *Dealer Order Services for Stone Com. A/S* in the **Desc.** field. Press enter.

```

KBEGCMLI                Insert Agreement Subset          IMB

Enter Agr.Subset Name & Desc., type action codes and press Enter
Action codes: A=Add R=Remove

Agr.Subset Name/Desc.: FOSSTONE / Dealer Order Services for Stone Com. A/S

A Option Fastp. Description                Included
- 5 DS Dealer Services
- 51 FOS Dealer Order Services
- 51A FOSMAP Maintenance of FOS map texts
a 512 ORDLIN Cancellation of order lines
a 513 ORDOV Order overview
a 514 ORDDet Order details
- 515 BACKOR Backorder summary per part number
- 516 PRODIN Product information
- 517 VOLIN Volume plan - input
- 518 VOLPLA Volume plan - overview
KBE113I Agreement subset FOSSTONE inserted, now add options to the set.

```

Figure 97. Insert Agreement Subset panel

This panel presents a list of all options available to the Trading Partner. Type action code **a** next to the options to be added to the Agreement Subset and press

enter. Options **51** and **5** are automatically added because they comprise part of the path to the added options.

```

KBEGCMLI                Insert Agreement Subset                IMB

Enter Agr.Subset Name & Desc., type action codes and press Enter
Action codes: A=Add R=Remove

Agr.Subset Name/Desc.: FOSSTONE / Dealer Order Services for Stone Com. A/S

A  Option  Fastp.  Description                Included
*  5       DS     Added                    Yes
*  51      FOS    Added                    Yes
-  51A     FOSMAP Maintenance of FOS map texts    No
*  512     ORDLIN Added                    Yes
*  513     ORDOV  Added                    Yes
*  514     ORDEET Added                    Yes
-  515     BACKOR Backorder summary per part number    No
-  516     PRODIN Product information            No
-  517     VOLIN  Volume plan - input          No
-  518     VOLPLA Volume plan - overview        No

```

Figure 98. Insert Agreement Subset panel

A Yes appears next to the selected options in the *Included* column.

Press F12 to return to the panel shown in Figure 99.

```

KBEGBMLL                Agreement Subset                IMB

Type one or more action codes, then press Enter.
Action codes: I=Insert D=Delete B=BPIs O=Options

FOSSTONE
A  Agr.Subset  Description
-  FOSSTONE   Dealer Order Services for Stone Com. A/S

```

Figure 99. Agreement Subset panel

The new Agreement Subset is now displayed.

## Inserting BPIs in an Agreement Subset

To include the BPI group *FOS Front-end Ordering System* in the Agreement Subset *FOSStone*, navigate to the Local Administration using fastpath command **LADM**.

```
LADM                               Local Administration (menu)          IMB

Type choice or fastpath, then press Enter.

_  1. AGRSUB Agreement Subsets
   2. USERS  Users
   3. PERSON Persons
   4. SUBSCR Subscribe to MailRoom Services
   5. ELADR  Electronic Addresses
   7. BPITP Refresh BPIs for a Trading Partner
   8. USERAC User Access
   9. USERLI User List

Command ==>> 1
F1=Help   F3=Exit   F12=Cancel
```

Figure 100. Local Administration (menu) panel

Select option 1 or type the fastpath command **AGRSUB** and you get the panel shown in Figure 101.

```
KBEGBMLL                           Agreement Subsets          IMB

Type one or more action codes, then press Enter.
Action codes: I=Insert D=Delete B=BPIs O=Options

A  Agr.Subset  Description
b  FOSSTONE   Dealer Order Services for Stone Com. A/S
```

Figure 101. Agreement Subsets panel

Type the action code **b** next to **FOSSTONE** and press enter.

```

KBEGDMLM          Modify BPIs in Agreement Subset          IMB

Modify Agr.Subset Desc., Type action codes, then press Enter.
Action codes: A=Add R=Remove

Agr.Subset Name/Desc.: FOSSTONE / Dealer Order Services for Stone Com. A/S

A  Syst BPI Grp. Function Description                               Included
a  KAE  *      *      FOS Front-end Ordering System      Group No
-  KAE  ORDER  DETAILS  Get details of an order              No
-  KAE  ORDER  OVERVIEW  Get overview of an order            No
-  KAE  ORDER  PARTLIST  Call FOS/CICS to get a list of par    No
-  KAE  ORDER  TYPES    Call UPOS/IMS to get types of orde    No
-  KAE  ORDER  UPDATE   Call UPOS/IMS to Update an order      No
-  KAG  *      *      ECINFO                               Group No
-  KAG  FEATURES LIST   List of Features ECINFO              No
-  KAG  INVENTOR LIST   Inventory list                          Yes
-  KAG  ORDERS  LIST    List of Orders                            No

```

Figure 102. Modify BPIs in Agreement Subset panel

The panel shows a list of all BPIs available to the Trading Partner. The BPIs that are required for the Agreement Subset are in the BPI Group described as *FOS Front-end Ordering System*.

Type action code **a** next to the BPI Group to be added and press enter. You get the panel shown in Figure 103.

These BPI functions are automatically added because they are included in the contents of the group:

```

DETAILS
OVERVIEW
PARTLIST
TYPES
UPDATE

```

```

KBEGDMLM          Modify BPIs in Agreement Subset          IMB

Modify Agr.Subset Desc., Type action codes, then press Enter.
Action codes: A=Add R=Remove

Agr.Subset Name/Desc.: FOSSTONE / Dealer Order Services for Stone Com. A/S

A  Syst BPI Grp. Function Description                               Included
*  KAE  *      *      Added                               Group Yes
*  KAE  ORDER  DETAILS  Added                               Yes
*  KAE  ORDER  OVERVIEW  Added                               Yes
*  KAE  ORDER  PARTLIST  Added                               Yes
*  KAE  ORDER  TYPES    Added                               Yes
*  KAE  ORDER  UPDATE   Added                               Yes
-  KAG  *      *      ECINFO                               Group No
-  KAG  FEATURES LIST   List of Features ECINFO              No
-  KAG  INVENTOR LIST   Inventory list                          Yes
-  KAG  ORDERS  LIST    List of Orders                            No

```

Figure 103. Modify BPIs in Agreement Subset panel

A **Yes** appears next to the selected options in the *Included* column.

Press F12 to return to the panel shown in Figure 104 on page 64.

```
KBEGBMLL                Agreement Subsets                IMB

Type one or more action codes, then press Enter.
Action codes: I=Insert  D=Delete  B=BPIs  O=Options

A  Agr.Subset  Description
*  FOSSTONE    Dealer Order Services for Stone Com. A/S
```

Figure 104. Agreement Subsets panel

## Refresh BPIs

After changing the Agreement Subset a user is connected to, the resulting BPI access list can be refreshed by selecting option 7 from the Local Administration main menu.

Navigate to the Local Administration menu by typing the fastpath command **LADM**. You get the panel shown in Figure 105.

```
LADM                Local Administration (menu)                IMB

Type choice or fastpath, then press Enter.

-  1. AGRSUB Agreement Subsets
   2. USERS  Users
   3. PERSON Persons
   4. SUBSCR Subscribe to MailRoom Services
   5. ELADR  Electronic Addresses
   7. BPITP Refresh BPIs for a Trading Partner
   8. USERAC User Access
   9. USERLI User List

Command ==>> 7
F1=Help   F3=Exit   F12=Cancel
```

Figure 105. Local Administration (menu) panel

Select option 7 or type the fastpath command **BPITP** to get the panel shown in Figure 106 on page 65.



```

LADM                               Local Administration (menu)           IMB

Type choice or fastpath, then press Enter.

- 1. AGRSUB Agreement Subsets
  2. USERS Users
  3. PERSON Persons
  4. SUBSCR Subscribe to MailRoom Services
  5. ELADR Electronic Addresses
  7. BPITP Refresh BPIs for a Trading Partner
  8. USERAC User Access
  9. USERLI User List

KBI210I Current BPI access List has been updated.
Command ==>
F1=Help      F3=Exit      F12=Cancel

```

Figure 106. Local Administration (menu) panel

The BPI Access List is refreshed for all users at the current Trading Partner, and a message is displayed if the refresh is successful.

## Connecting a User to an Agreement Subset

To connect the Agreement Subset *FOSSTONE* to the user *USER2*, navigate to the panel shown in Figure 107 by typing the fastpath command **USERS**.

```

KBEHMLL                               Users                               IMB

Type action code, then press Enter.
Action code: S=Select O=Agreement Subsets

-----
A User      Name                               Option and BPI access
- USER1    Trading Partner access
o USER2    Trading Partner access

```

Figure 107. Users panel

Type **o** next to user *USER2* and you get the panel shown in Figure 108 on page 66.

```

KBEBFMLL                Agreement Subsets                IMB

Type one or more action codes, then press Enter.
Action codes: A=Add R=Remove X=Scope

User : ISMHE2

A  AgSubSe  Description                Included  Scope
-  ADMIN    Central User Administration      No
a  FOSSTONE  Dealer Order Services for Stone Com. A/S No
-  DEALER   Regular PS dealer                No
-  DIREKTE  Profil til DIMAS II              No
-  DK00420  *** New Access Profile ***       No

```

Figure 108. Agreement Subsets panel

Use action code **a** to add *FOSSTONE*.

```

KBEBFMLL                Agreement Subsets                IMB

Type one or more action codes, then press Enter.
Action codes: A=Add R=Remove X=Scope

User : ISMHE2

A  AgSubSe  Description                Included  Scope
-  ADMIN    Central User Administration      No
*  FOSSTONE  Added                          Yes       No
-  DEALER   Regular PS dealer                No
-  DIREKTE  Profil til DIMAS II              No
-  DK00420  *** New Access Profile ***       No

```

Figure 109. Agreement Subsets panel

Press F12 to return to the panel shown in Figure 110.

```

KBEBHMLL                Users                IMB

Type action code, then press Enter.
Action code: S=Select O=Agreement Subsets

A  User      Name                Option and BPI access
-  USER1                        Trading Partner access
-  USER2                        Agreement Subset(s)

```

Figure 110. Users panel

This panel shows that the user is connected to one or more Agreement Subsets.

## Connecting a Scope to a User or Agreement Subset

To connect the scope *MAILROOM-CTRY* to the user *USER2*, and Agreement Subset *EDI-PAN*, navigate to the panel shown in Figure 111 using fastpath **USERAC**.

```

KBEMHMCL          User access to Agreement Subsets and Scopes          IMB

Type one or more action codes, then press Enter.
Action codes: M=Modify

A  User      Agr.Sub.  Scope          Values          Priv.
-  USER1    <TP>      ADMIN-CTRY    *
-                               MAILROOM-CTRY *
-                               HELPHD-CTRY   *
-                               123
m  USER2    EDI-PAN    <NONE>
-                               FOSSTONE <NONE>
  
```

Figure 111. User access to Agreement Subsets and Scopes panel

Use action code **m**. to select *USER2*. You get the panel shown in Figure 112.

```

KBEBFMLL          Agreement Subsets          IMB

Type one or more action codes, then press Enter.
Action codes: A=Add R=Remove X=Scope

User : USER2

A  AgSubSe  Description          Included  Scope
-  ADMIN    Central User Administration  No
-  FOSSTONE Dealer Order Services for Stone Com. A/S  Yes  No
x  EDI-PAN  Mailroom Envelope Status panels          Yes  No
  
```

Figure 112. Agreement Subsets panel

Type **x** for *Scope* and you get the panel shown in Figure 113.

```

KBEMKMLL          Scope in Agreement Subset          IMB

Type one or more action codes, then press Enter.
Action codes: M=Modify R=Remove

User . . . . . : USER2          Agreement Subset . . . . : EDI-PAN

123
A  Cty  Scope Key          Description          Restriction Filter  Privil.
-  123  ADMIN-CTRY          Scope used in Centr <Inactive>
m  123  MAILROOM-CTRY      Scope used in ENVST <Inactive>
-  123  HELPHD-CTRY          HLP-CTRY SCOPE     <Inactive>
  
```

Figure 113. Scope in Agreement Subset panel

Type action code **m** next to scope *MAILROOM-CTRY* and you get the panel shown in Figure 114 on page 68.

```

KBEMLMCM          Restriction Filters in Agreement Subset for User          IMB
Press Enter to modify Restriction Filter

Agreement Subset. : EDI-PAN / Mailroom Envelope Status panels
User. . . . . : USER2          Scope . . . . . : MAILROOM-CTRY
Legal Privileges. :

Restriction filter          Privilege
-----+-----
-----+-----
-----+-----
-----+-----
-----+-----
-----+-----
-----+-----
-----+-----
-----+-----
-----+-----
-----+-----
-----+-----
KBE327I No access to any Restriction Filters yet

```

Figure 114. Restriction Filters in Agreement Subset for User panel

Type the Country Code in the *Restriction filter* field. Press F4 for a list of possible values.

```

KBEKBMCP          Trading Partner Scope          IMB

Type one action code, then press Enter.
Action codes: S=Select

Trading Partner . . . . : 123 / 009999999 / IBM Test Country users

  123 MAILROOM-CTRY
A  Cty Scope          Description          Restriction Filter
-  123 MAILROOM-CTRY  Scope used in ENVST  <Active>
-                                     *
s                                     123
-                                     678
-                                     748
-

```

Figure 115. Trading Partner Scope panel

Use action code **s** to select Country Code 123 and press Enter. You get the panel shown in Figure 116 on page 69.

```

KBEMLMCM          Restriction Filters in Agreement Subset for User          IMB
Press Enter to modify Restriction Filter
Agreement Subset. : EDI-PAN / Mailroom Envelope Status panels
User. . . . . : USER2          Scope . . . . . : MAILROOM-CTRY
Legal Privileges. :

Restriction filter          Privilege
123_____ +              _____
_____ +                  _____
_____ +                  _____
_____ +                  _____
_____ +                  _____
_____ +                  _____
_____ +                  _____
_____ +                  _____
_____ +                  _____
_____ +                  _____

```

Figure 116. Restriction Filters in Agreement Subset for User panel

Press Enter and the Scope is included.

```

KBEMKMLL          Scope in Agreement Subset          IMB
Type one or more action codes, then press Enter.
Action codes: M=Modify R=Remove
User . . . . . : USER2          Agreement Subset . . . : EDI-PAN
 123 _____
A  Cty Scope Key      Description      Restriction Filter      Privil.
_ 123 ADMIN-CTRY      Scope used in Centr <Inactive>
* 123 MAILROOM-CTRY  Scope used in ENVST <Active>
                               123                      UPD
_ 123 HELPHD-CTRY    Scope used in HELPH <Inactive>

```

Figure 117. Scope in Agreement Subset panel

The Scope Key *MAILROOM-CTRY* is displayed, as *<Active>* with restriction filter *123*. *USER2* now has the access to run the fastpath command **ENVST**, and to operate on all data belonging to Country Code *123*.

## Adjusting the environment for a User

To adjust the environment for the user *USER2*, and to set the preferred language to *Danish* and the delimiter to ; (semi colon), navigate to the panel shown in Figure 118 on page 70 by typing the fastpath command **USERS**.

```

KBEBHMLL                               Users                               IMB
Type action code, then press Enter.
Action code: S=Select O=Agreement Subsets

_____
A User      Name                               Option and BPI access
  USER1
s USER2    Steven Levenson                    Trading Partner access
                                              Agreement Subset(s)

```

Figure 118. Users panel

Select the user by typing action code **s** next to *USER2* and press enter. You get the panel shown in Figure 119.

```

KBEBIMLS                               Details of User                               IMB
Modify fields and press enter

User . . . . . : USER2
Local Administrator ? . : 1 0=No/1=Yes
Preferred Language . . . : DA
Delimiter . . . . . : ;
Cursor Position . . . . . 0 0=Command line/1=Top
Suppress Panel ID ? . . . 0 0=No/1=Yes

Option and BPI access. : Agreement Subset(s)

First Name(s). . . . . Steven_____ +
Last Name . . . . . Levenson_____ +
Department Code . . . . _____

```

Figure 119. Details of User panel

Change the preferred language to Danish by typing *DA* in the *Preferred Language* field.

Change delimiter by typing *;* in the *Delimiter* field. Press enter to modify the user information.

```

KBEBHMLL                                Users                                IMB

Type action code, then press Enter.
Action code: S=Select O=Agreement Subsets

-----
A User      Name
USER1
* USER2     Modified

-----
Option and BPI access
Trading Partner access
Agreement Subset(s)

```

Figure 120. Users panel

The changes will take effect at next log on to BTB, or when the *RESET* command is entered by the user.

## Panel flow for Agreement Subsets

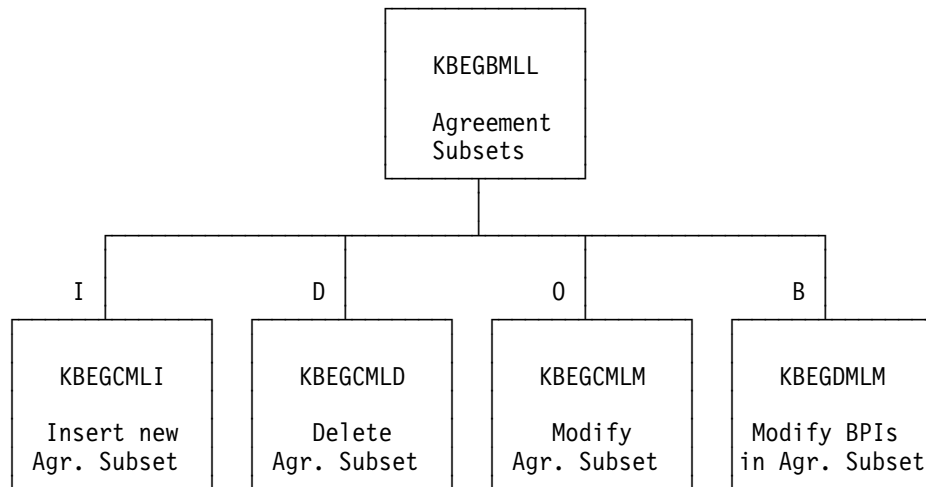


Figure 121. Local Administration, Agreement Subset structure overview. **I**, **D**, **O**, and **B** are action codes on the panel.

---

## Agreement Subsets

### Access

- Option 1 from the panel shown in Figure 93 on page 58.
- Fastpath command **AGRSUB** from any panel.

For more information about any of the fields in the panels in this chapter, refer to online help.

```
KBEGBMLL                Agreement Subsets                IMB

Type one or more action codes, then press Enter.
Action codes: I=Insert D=Delete B=BPIs O=Options

A Agr.Subset Description
- DEALER      Regular PS dealer
- DIREKTE    Profil til DIMAS II
- ECIAGENT    ECINFO for agenter
- ECICAIBM    ECINFO cust. & agent options with HELPHD
- ECICUIBM    ECINFO customer options with HELPHD
- ECICUSTO    ECINFO for kunder
- EDI_DEMO    TO BE GIVEN TO INTERNAL DEMO USERS...
- EDI_VPDS    EDI Surveillance for VPDS proj. (IFTMIN)
- EMPTY      No access under IMB
- FORHHELP    Helpdesk for 'Forhandler Ordre Service'
- FORORDRE    FOS Ordrebehandler-profil
```

Figure 122. Agreement Subsets panel

### Description

The panel shows a list of all Agreement Subsets for a Trading Partner. An Agreement Subset is a subset of the options and BPIs in the Trading Partner Agreement Sets and is used to reduce the set of options and BPIs for a group of users.

One or more users can have the same Agreement Subset, and a user can have none, one, or more Agreement Subsets. If a user does not have an Agreement Subset, the user has the same access to options and BPIs as the Trading Partner to which they belong.

---

## Delete/Insert/Modify Agreement Subset

### Access

- From the panel in Figure 122.



```

KBEGCMLM                Modify Agreement Subset                IMB

Modify Agr.Subset Desc., Type action codes, then press Enter.
Action codes: A=Add R=Remove

Agr.Subset Name/Desc.: Henry / Agreement Subset for Henry_____

A  Option  Fastp.  Description                Included
-   1      Order  Order management           Yes
-   11     NEWORD Create new order            No
-   12     BACKOR  Backorders                 No
-   121    BACK1   Backorders department 1    No
-   122    BACK2   Backorders department 1    No
-   13     OLDORD  Last years orders         Yes
-   131    OLD1H   Last years orders first half Yes
-   132    OLD2H   Last years orders secd. half Yes
-   2      INVOIC  Invoices                  No
-   21     INVOIA  Invoices department a     No

```

Figure 123. Modify Agreement Subset panel

## Description

From this panel the Local Administrator can modify, insert, and delete the description and contents of an Agreement Subset. From this panel only the options can be modified.

---

## Modify BPIs in Agreement Subset

### Access

- From the panel in Figure 122 on page 72.

```

KBEGDMLM                Modify BPIs in Agreement Subset                IMB

Modify Agr.Subset Desc., Type action codes, then press Enter.
Action codes: A=Add R=Remove

Agr.Subset Name/Desc.: BENDT / bendts demo_____

A  Syst  BPI  Grp.  Function  Description                Included
-   KAE  *    *    *    FOS Front-end Ordering System  Group No
-   KAE  ORDER  DETAILS  Get details of an order        No
-   KAE  ORDER  OVERVIEW  Get overview of an order       No
-   KAE  ORDER  PARTLIST  Call FOS/CICS to get a list of par No
-   KAG  *    *    ECINFO    Group No
-   KAG  ORDERS  LIST    List of Orders                 No

```

Figure 124. Modify BPIs in Agreement Subset panel

## Description

From this panel the Local Administrator can modify the BPI contents of an Agreement Subset.

## Panel flow for Users

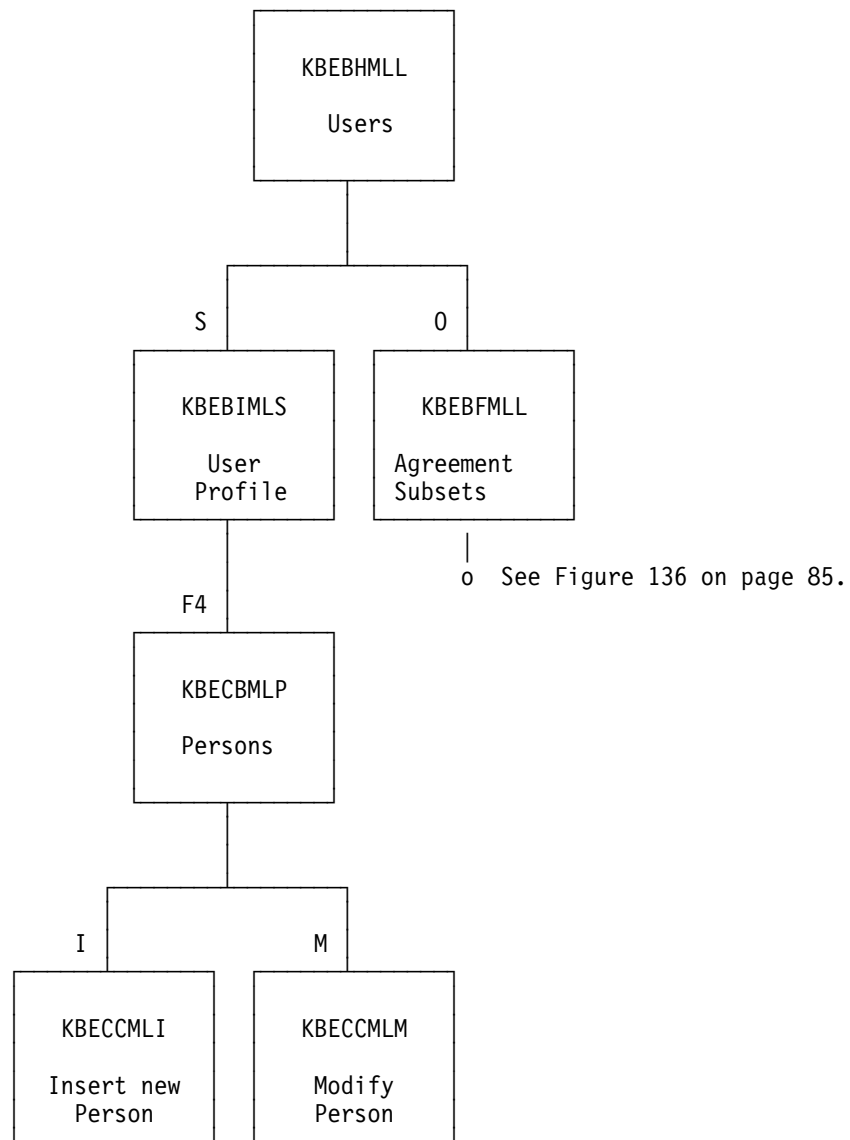


Figure 125. Local Administration—users structure. **S**, **F4**, **I**, **M**, and **O** are action codes on the panel.

---

## Users

### Access

- Option 2 from the panel shown in Figure 93 on page 58.
- Fastpath command **USERS** from any panel.

```
KBEBHMLL                Users                IMB

Type action code, then press Enter.
Action code: S=Select O=Agreement Subsets

A  User      Name                                Option and BPI access
-  DK00001   Henrik Doer                          Agreement Subset(s)
-  DK00002   John Petersson                       Trading Partner access
-  DK00003   Henry Anderson                      Trading Partner access
-  DK00004   John Johnsson                       Agreement Subset(s)
```

Figure 126. Users panel

### Description

The panel shows a list of all users connected to the Trading Partner. From this list a user can be selected for maintenance.

A Local Administrator cannot insert or delete a user—this can only be done by Central Administration. Central Administration can assign a user as Local Administrator.

For more information about any of the fields in the panels refer to online help.

---

## User Profile

### Access

- From the panel in Figure 126.

```

KBEBIMLS                                User Profile                                IMB

Modify fields and press enter

User . . . . . : DK00003
Local Administrator ?. : 0 0=No/1=Yes
Preferred Language . . . : DA
Delimiter . . . . . /
Cursor Position . . . . 0 0=Command line/1=Top
Suppress Pandel ID ? . . 0 0=No/1=Yes

Option and BPI access. : Agreement Subset(s)

First Name(s). . . . . Henry_____ +
Last Name . . . . . Andersson_____ +
Department Code . . . . I/S_____

```

Figure 127. User Profile panel

## Description

From this panel you can to view and modify a user profile.

All information except *User*, *Local Administrator* and *Option and BPI access* can be modified.

---

## Agreement Subsets

### Access

- From the panel in Figure 126 on page 76.

```

KBEBFMLL                                Agreement Subsets                                IMB

Type one or more action codes, then press Enter.
Action codes: A=Add R=Remove X=Scope

User : BIASDK

A AgSubSe Description Included Scope
- ADMIN Central User Administration No
- BENDT bendts demo No
- CRBPROF /// CRB Programmers profile \\ No
- CSPADM Sven Almann No
- DEALER Regular PS dealer No
- DIREKTE Profil til DIMAS II Yes No
- DK00420 *** New Access Profile *** No
- DK01840 *** New Access Profile *** No
- DK01866 *** New Access Profile *** No
- DK05165 *** New Access Profile *** No

```

Figure 128. Agreement Subsets panel

## Description

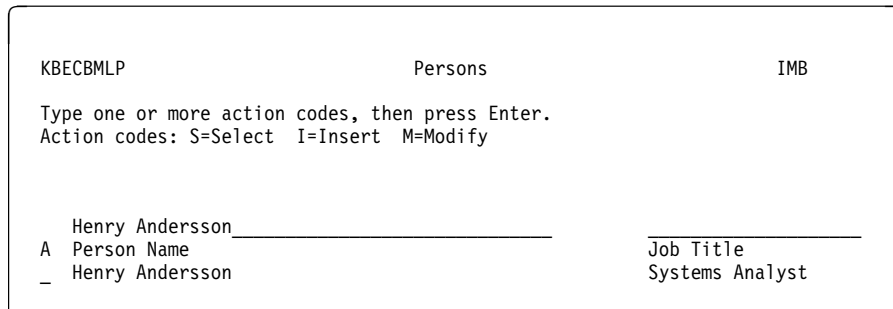
This panel shows a list of Agreement Subsets available for a user. This list details whether the particular Agreement Subset is included for the user, and whether a Scope is linked to the Agreement Subset.

---

## Persons—prompt

### Access

- From the panel in Figure 127 on page 77, when F4 is pressed in the *First Name(s)* or *Last Name* field.



```
KBECBMLP                Persons                IMB
Type one or more action codes, then press Enter.
Action codes: S=Select I=Insert M=Modify

A  Henry Andersson _____
   Person Name                               Job Title
_  Henry Andersson                          Systems Analyst
```

Figure 129. Persons panel

## Description

This panel is for prompting for the persons in a user ID. If the *Person Name* field was left blank in the *Details of User*, panel the panel shows a list of all persons defined for the Trading Partner. Otherwise, the contents of the *Person Name* field from the previous panel are used as search argument. You can also insert a new person and modify a person from this panel. The insert panel is shown in Figure 132 on page 80.

---

## Panel flow for Persons

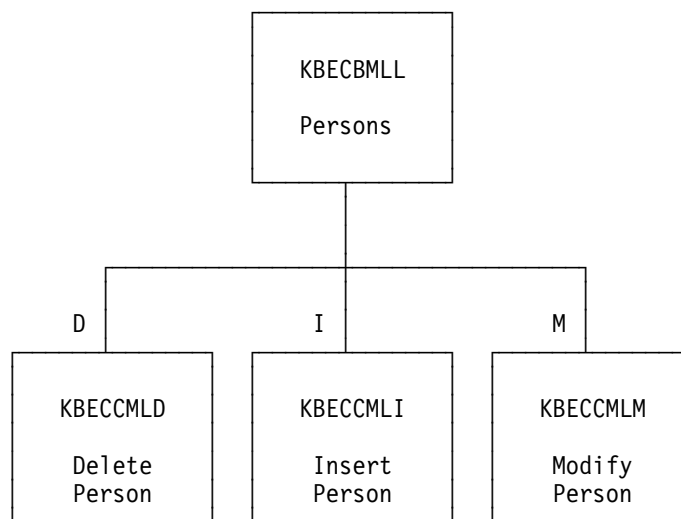


Figure 130. Local Administration, persons structure overview. **D**, **I**, and **M** are action codes on the panel.

---

## Persons

### Access

- Option 3 from the panel shown in Figure 93 on page 58.
- Fastpath command **PERSON** from any panel.

```
KBECBMLL                Persons                IMB

Type one or more action codes, then press Enter.
Action codes: D=Delete  I=Insert  M=Modify

A _____ Job Title _____
- Henry Andersson      Systems Analyst
- Kjeld Christensen
- Wolfgang Christensen Systems Analyst
```

Figure 131. Persons panel

### Description

This panel shows a list of all persons defined for a Trading Partner.

---

## Insert/Modify/Delete Person

### Access

- From the panel in Figure 131.
- From the panel in Figure 129 on page 78.

```
KBECCLLI                Insert new Person        IMB

Press Enter to insert new Person

Title . . . . . _____ (Mr/ Mrs/ Ms)
Firstname . . . . . _____
Lastname . . . . . _____

Job Title . . . . . _____
Professional Title . . . _____

Mail Point . . . . . _____

Telephone Extension No.. _____
Alt. Telephone Ext. No.. _____
```

Figure 132. Insert new Person panel

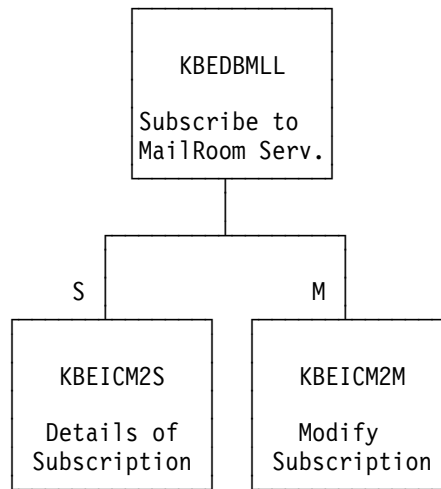


## Description

From this panel you can insert a person connected to a Trading Partner.

---

## Panel flow for Subscribe to MailRoom Services



*Figure 133. Local Administration, subscription structure overview. S and M: are action codes on the panel.*

---

## Subscribe to MailRoom Services

### Access

- Option 4 from the panel shown in Figure 93 on page 58.
- Fastpath command **SUBSCR** from any panel.

```
KBEDBMLL          Subscribe to MailRoom Services          IMB

Type one or more action codes, then press Enter.
Action codes: S=Select M=Modify

A Service Dir Layout Description State Sub.
- KBAZPGCI Recv KBAZVER-PGM-CICS Verification - PGM to CICS No
- KBAZPGDI Recv KBAZPGDI Verification - PGM to DI-EDI No
- KBAZPGEF Recv KBAZVER-EXP-FILE Verification - PGM to EXP-FIL No
- KBAZPGMA Recv KBAZVER-MAIL Verification - PGM to MAIL Enabled Yes
```

Figure 134. Subscribe to MailRoom Services panel

### Description

This panel shows a list of all MailRoom services available for subscription for the Agreement Subset of a Trading Partner. The action codes can only be used on the services that have been subscribed to (*Yes* in the *Subscription* field).

Use action code **S** to see detail information about a subscription or action code **M** to modify the subscription.

---

## Select/Modify Subscription

### Access

- From the panel in Figure 134.

```
KBEICM2M          Modify MailRoom Receive Subscription    IMB

Press Enter to modify Receive Subscription

Subscription Data
Service name . . . . . : KBAZPGMA
Description . . . . . : Verification - PGM to MAIL
Enabled . . . . . : 1 +
Comments . . . . . : _____

Dest: Mail
Mail address . . . . . HO: SPOC      at DKIBVM1_____ +
Dest Accounting Info . . _____
```

Figure 135. Modify MailRoom Receive Subscription panel

## Description

This panel lets you modify the MailRoom Receive Subscription.

---

## Panel flow for User access to Agreement Subsets and Scopes

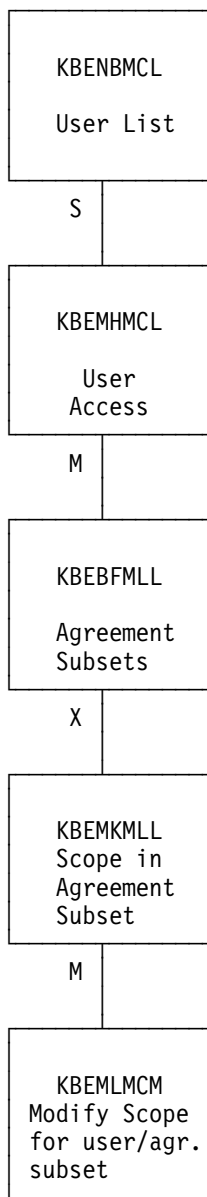


Figure 136. Local Administration, Users access to Agr. Subsets and Scopes. **s**, **m** and **x** are action codes on the panel.

---

## User List

### Access

- Option 9 from the panel shown in Figure 93 on page 58.
- Fastpath command **USERLI** from any panel.

```
KBENBMCL                User List                IMB

Type one or more action codes, then press Enter.
Action codes: S=Select

A  User      Lastname  Surname  J.Title  P.Title  Postc. Tel.  Al.Tel
-  USER1    Hertz    Lisa E.  Manager
-  USER2    Levenson Steven   Fos Oper.
```

Figure 137. User List panel

### Description

This panel shows all users with the information entered in the optional panel in Figure 132 on page 80.

Type action code **S** to get the panel shown in Figure 138.

---

## User access to Agreement Subsets and Scopes

### Access

- From the panel in Figure 137.
- Option 8 from the panel shown in Figure 93 on page 58.
- Fastpath command **USERAC** from any panel.

```
KBEMHMCL                User access to Agreement Subsets and Scopes  IMB

Type one or more action codes, then press Enter.
Action codes: M=Modify

A  User      Agr.Sub.  Scope      Values          Priv.
-  USERA    <TP>     ADMIN-CTRY *
-                               DEP-SCOPE      *
-                               MAILROOM-CTRY *
-                               HELPHD-CTRY   *
-                               123
-  USERB    CLERK    DEP-SCOPE  100*            U
-                               10015*        S
-  USERC    EDI-ALL  MAILROOM-CTRY *
-                               ADMIN-CTRY   *
-                               DEP-SCOPE    *
-                               MAILROOM-CTRY *
```

Figure 138. User access to Agreement Subsets and Scopes panel

## Description

Some applications in BTB need additional access in the form of a *scope*. A scope is a filter indicating data that the user can operate on.

This panel shows all users and connections to Agreement Subsets and Scopes. A user can have access to the same options as the Trading Partner, or can have one or more Agreement Subsets (which is a subset of the options and BPIs in the Trading Partner Agreement Sets).

If a user is linked to an Agreement Subset, and the application the user needs to run requires a Scope, the user must also have a scope linked to the Agreement Subset.

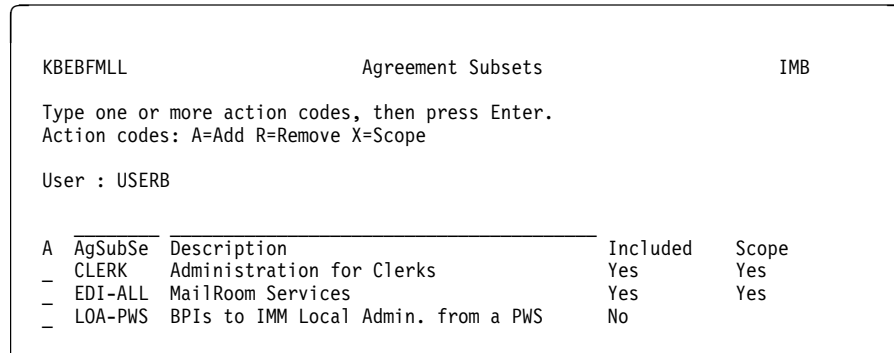
If the user has Trading Partner options, the user will automatically be linked to the Scope which the Trading Partner has (shown on the list by <TP> in the Agr.Sub. column).

---

## Agreement Subsets

### Access

- From the panel in Figure 138 on page 86.



```
KBEBFMLL          Agreement Subsets          IMB

Type one or more action codes, then press Enter.
Action codes: A=Add R=Remove X=Scope

User : USERB

A  AgSubSe  Description          Included  Scope
-  CLERK    Administration for Clerks  Yes      Yes
-  EDI-ALL  MailRoom Services      Yes      Yes
-  LOA-PWS  BPIs to IMM Local Admin. from a PWS  No
```

Figure 139. Agreement Subsets panel

## Description

This panel shows an overview of all Agreement Subsets, and whether the selected user is connected to them. If an Agreement Subset is included, a *Yes* or *No* in the Scope column indicates if a Scope is linked to the Agreement Subset.

---

## Scope in Agreement Subset

### Access

- From the panel in Figure 139 on page 87.

```
KBEMKMLL          Scope in Agreement Subset          IMB

Type one or more action codes, then press Enter.
Action codes: M=Modify R=Remove

User . . . . . : USERB          Agreement Subset . . . : CLERK

  123
A  Cty Scope Key      Description      Restriction Filter  Privil.
-  123 ADMIN-CTRY     Scope used in Centr <Inactive>
-  123 DEP-SCOPE     Scope used in Centr <Active>
-                                     100*
-                                     10015*
-  123 MAILROOM-CTRY Envelope Status Cty <Active>
-                                     *
-  123 HELPHD-CTRY   HelpHD Country    <Inactive>
-                                     UPD
```

Figure 140. Scope in Agreement Subset panel

### Description

This panel shows an overview of all Scopes defined for this Trading Partner. *<Inactive>* indicates that this scope has not yet been linked to the User or Agreement Subset. *<Active>* is displayed when a Scope has been linked to a User or Agreement Subset.

---

## Restriction Filters in Agreement Subset for User

### Access

- From the panel in Figure 140.



```

KBEMLMCM      Restriction Filters in Agreement Subset for User      IMB
Press Enter to modify Restriction Filter
Agreement Subset. : CLERK      / Administration for Clerks
User. . . . . : USERB      Scope . . . . . : DEP-SCOPE
Legal Privileges. : I  U  S

Restriction filter      Privilege
100*_____ +          U__
10015*_____ +        S__
_____ +              ___
_____ +              ___
_____ +              ___
_____ +              ___
_____ +              ___
_____ +              ___
_____ +              ___
_____ +              ___
_____ +              ___
KBE327I No access to any Restriction Filters yet

```

Figure 141. Restriction Filters in Agreement Subset for User panel

## Description

From this panel you can insert, modify, or delete Restriction Filters. The restriction filters must always have the same value as the restriction filters defined for the Trading Partner. Press F4 to get a list of possible values.



---

# Index

## A

adding  
  *See also* inserting  
  agreement set 14, 39, 66  
  country 9  
  electronic address for a trading partner 18  
  person 35  
  trading partner 11  
  user 15

administration  
  Agreement Subset 5  
  central  
    Agreement Sets 4, 39  
    agreement subsets 48  
    central trading partner administration 39  
    Country Code 3  
    describing the panels 37—52  
    Electronic Addresses 3, 40  
    entities 2  
    External Trading Partner IDs 3  
    external trading partners 43  
    limiting Trading Partner privileges 2  
    MailRoom services for subscription 44  
    overview 2  
    Persons 4, 41  
    resources 2  
    scope 50  
    Scopes 4  
    Subscriptions 4  
    Trading Partners 3  
    Users 4, 46

local  
  agreement subsets 72, 77, 87  
  applications 4  
  data 5  
  delete agreement subsets 72  
  delete person 80  
  describing the panels 57—89  
  insert agreement subsets 72  
  insert person 80  
  main menu 57  
  modify agreement subsets 72  
  modify BPIs 73  
  modify person 80  
  modify subscription 83  
  overview 4  
  persons 78, 80  
  restriction filters in agreement subsets 88  
  scope in agreement subsets 88  
  select subscription 83  
  Subscribe to MailRoom Services 83  
  typical tasks 58

administration (*continued*)  
  local (*continued*)  
    user list 86  
    user profile 76  
    users 76  
  maintaining resources  
    adding a country 9  
    adding a person 35  
    adding a trading partner 11  
    adding a user 15  
    adding an electronic address for a trading partner 18  
    defining a scope 32  
    defining external trading partners 30  
    getting the Central User Administration menu 7  
    giving a trading partner access 13  
    maintaining trading partner subscriptions 21  
  responsibilities 1  
  roles 1  
  system 1, 2, 3  
  tasks 1  
  understanding 1

Administration panel 8  
Agreement Sets panel 14, 39  
Agreement Subset 5  
Agreement Subsets panel 48, 60, 62

## B

BATCH 26, 28  
bibliography viii—ix  
BPI  
  adding 58  
  description 4  
  modifying in Agreement Subset 63, 73  
  refresh 58

BTB  
  *See* Business Transaction Broker

BTB logon panel 7, 57  
Business Programming Interface  
  *See* BPI

Business Transaction Broker  
  adding a user 46  
  changes in the release xi  
  enhancements xi

## C

central administration  
  agreement sets 39  
  agreement subsets 48  
  central trading partner administration 39

central administration (*continued*)  
describing the panels 37—52  
electronic addresses 40  
external trading partners 43  
MailRoom services for subscription 44  
persons 41  
scope 50  
users 46  
Central Administration panel 8, 9, 11, 15, 35  
Central Trading Partner Administration panel 39  
changes in this release xi  
CICS 7, 57  
country code 54  
Country codes panel 9, 10

## D

defining  
external trading partners 30  
scope 32  
deleting  
agreement subset 61, 62  
agreement subsets 72  
electronic address 40  
person 42, 80  
trading partner 54  
Details of User panel 70  
DI-EDI 26, 28

## E

Electronic Addresses panel 19  
enhancements to BTB xi  
EXP-DOC 26, 28  
EXP-FILE 26, 28  
Expedite/CICS 26  
External Trading Partners panel 31, 43

## F

FAX 28

## I

IDOC 28  
IMB vii  
Insert Agreement Subset panel 60, 61  
Insert new Country panel 10  
Insert new Electronic Address panel 19  
Insert new External Trading Partner panel 31  
Insert new MailRoom Receive Subscription panel 22,  
23, 28  
Insert new MailRoom Send Subscription panel 25, 26  
Insert new Person panel 36, 80  
Insert new User panel 16, 46  
Insert Trading Partner panel 12

inserting  
*See also* adding  
agreement subset 60, 61  
country 9  
electronic address 18, 40  
external trading partner 30  
IMB user 46  
MailRoom receive subscription 22  
MailRoom trading partner subscription 45  
person 35, 78, 80  
trading partner 11, 54  
Intelligent Message Broker vii

## L

List of possible values panel 22, 28  
local administration  
agreement subsets 72, 77, 87  
delete agreement subset 72  
delete person 80  
describing the panels 57—89  
insert agreement subset 72  
insert person 80  
main menu 57  
modify agreement subset 72  
modify BPIs 73  
modify person 80  
modify subscription 83  
persons 78, 80  
restriction filters in agreement subsets 88  
scope in agreement subsets 88  
select subscription 83  
Subscribe to MailRoom Services 83  
typical tasks 58  
user list 86  
user profile 76  
users 76  
Local Administration (menu) panel 59, 65  
Local Administration (menu)panel 62

## M

MAIL 28  
MailRoom  
envelope status 59  
panel flow 82  
services available for subscription 22, 44, 83  
Main Panel 7, 57  
maintaining resources  
adding a country 9  
adding a person 35  
adding a trading partner 11  
adding a user 15  
adding an electronic address for a trading  
partner 18  
defining a scope 32

maintaining resources (*continued*)  
 defining external trading partners 30  
 getting the Central User Administration menu 7  
 giving a trading partner access 13  
 maintaining trading partner subscriptions 21  
 Modify Agreement Subset panel 73  
 Modify BPIs in Agreement Subset panel 63, 73  
 Modify Electronic Addresses panel 40  
 Modify External Trading Partner panel 43  
 Modify MailRoom Receive Subscription panel 44, 83  
 Modify Person panel 41  
 Modify Trading Partner panel 54  
 modifying  
 agreement subsets 72  
 BPIs 63, 73  
 electronic address 40  
 external trading partner 43  
 MailRoom receive subscription 44  
 MailRoom service 83  
 person 78, 80  
 restriction filter 68, 69  
 scope 33, 51  
 subscription 83  
 trading partner 54  
 user details 70  
 MQ 26, 28  
 MQSeries 26, 28

## N

non-programmable workstation  
 See NPT  
 NPT 5

## P

panel flow  
 Agreement Subsets 71  
 MailRoom 82  
 Persons 79  
 User access to Agreement Subsets 85  
 User access to Scopes 85  
 Users 76  
 panels  
 Administration 8  
 Agreement Sets 14, 39  
 Agreement Subsets 48, 60, 62  
 BTB logon 7, 57  
 Central Administration 8, 9, 11, 15, 35  
 Central Trading Partner Administration 39  
 Country codes 9, 10  
 Details of User 70  
 Electronic Addresses 19  
 External Trading Partners 31, 43  
 flow  
 Agreement Subsets 71  
 MailRoom 82

panels (*continued*)  
 flow (*continued*)  
 Persons 79  
 User access to Agreement Subsets 85  
 User access to Scopes 85  
 Users 76  
 Insert Agreement Subset 60, 61  
 Insert new Country 10  
 Insert new Electronic Address 19  
 Insert new External Trading Partner 31  
 Insert new MailRoom Receive Subscription 22, 23, 28  
 Insert new MailRoom Send Subscription 25, 26  
 Insert new Person 36, 80  
 Insert new User 16, 46  
 Insert Trading Partner 12  
 List of possible values 22, 28  
 Local Administration (menu) 59, 62, 65  
 Main 7, 57  
 Modify Agreement Subset 73  
 Modify BPIs in Agreement Subset 63, 73  
 Modify Electronic Addresses 40  
 Modify External Trading Partner 43  
 Modify MailRoom Receive Subscription 44, 83  
 Modify Person 41  
 Modify Trading Partner 54  
 Persons 36, 41, 80  
 Restriction Filters in Agreement Subset for User 68, 69, 89  
 Scope 33  
 Scope in Agreement Subset 67, 69, 88  
 Scope values for scope 33  
 Subscribe to MailRoom Services 24, 25, 83  
 Temporary change of Trading Partner 55  
 Trading Partner Scope 33, 34, 68  
 Trading Partner Users 16, 46  
 Trading Partners 35  
 User access to Agreement Subsets and Scopes 67, 86  
 User List 86  
 User Profile 77  
 Users 66  
 Persons panel 36, 41, 80  
 PGM 26  
 PGM-BEC 28  
 PGM-CICS 28  
 programmable workstation  
 See PWS  
 PWS 5

## R

R/3 26, 28  
 RACF 4  
 resource maintenance  
 adding a country 9

resource maintenance (*continued*)  
adding a person 35  
adding a trading partner 11  
adding a user 15  
adding an electronic address for a trading partner 18  
defining a scope 32  
defining external trading partners 30  
getting the Central User Administration menu 7  
giving a trading partner access 13  
maintaining trading partner subscriptions 21  
Restriction Filters in Agreement Subset for User panel 68, 69, 89

## S

SAP 26, 28  
SAP-MQ 26, 28  
Scope in Agreement Subset panel 67, 69, 88  
Scope panel 33  
Scope values for scope panel 33  
sending comments ix  
Subscribe to MailRoom Services panel 24, 25, 83

## T

TCPIP 26, 28  
Temporary change of Trading Partner panel 55  
terminology vii  
TIE-IMS 26  
TP  
    *See* Trading Partner  
Trading Partner  
    access 2  
    Agreement Sets 4  
    Electronic Addresses 3  
    External IDs 3  
    grouping 3  
    limiting privileges 2  
    maintaining 52—55  
    organization 2  
    Persons 4  
    resources 3  
    Scopes 4  
    Subscriptions 4  
    users 2, 4  
Trading Partner Scope panel 33, 34, 68  
Trading Partner Users panel 16, 46  
Trading Partners panel 35

## U

User access to Agreement Subsets and Scopes panel 67, 86  
User List panel 86


User Profile panel 77  
Users panel 66

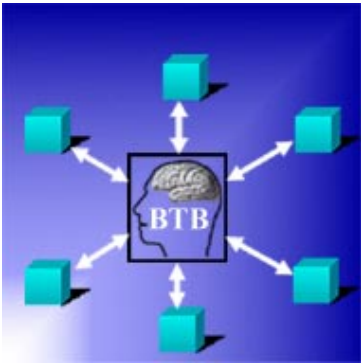
## W

Working Criteria table  
    country code 54





 Printed in the United States of America  
on recycled paper containing 10%  
recovered post-consumer fiber.



SC27-1585-01

